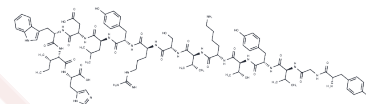


## Activated Protein C (390-404), human

## Chemical Properties

CAS No. :	146340-20-7
Formula:	C91H130N22O23
Molecular Weight:	1900.14
Storage:	Keep away from moisture Powder: -20°C for 3 years   In solvent: -80°C for 1 year <small>Actual storage temperature shall be subject to the COA.</small>



## Biological Description

Description	Activated Protein C (390-404), human, a peptide derived from the vitamin K-dependent serine protease, effectively suppresses the anticoagulant activity of APC [1].
Targets(IC50)	Serine Protease

## Solubility Information

Solubility	H2O: Soluble, (< 1 mg/ml refers to the product slightly soluble or insoluble)
------------	--

## Preparing Stock Solutions

	1mg	5mg	10mg
1 mM	0.5263 mL	2.6314 mL	5.2628 mL
5 mM	0.1053 mL	0.5263 mL	1.0526 mL
10 mM	0.0526 mL	0.2631 mL	0.5263 mL
50 mM	0.0105 mL	0.0526 mL	0.1053 mL

Please select the appropriate solvent to prepare the stock solution, according to the solubility of the product in different solvents. Please use it as soon as possible.

Note: The dilution table applies only to solid products. For liquid products, please calculate the stock solution based on the stated concentration and/or density.

## Reference

Mesters RM, et al. Identification of a sequence of human activated protein C (residues 390-404) essential for its anticoagulant activity. J Biol Chem. 1991 Dec 25;266(36):24514-9.

**Inhibitor · Natural Compounds · Compound Libraries · Recombinant Proteins**

This product is for Research Use Only · Not for Human or Veterinary or Therapeutic Use

Tel:781-999-4286 E\_mail:info@targetmol.com Address:34 Washington Street,Wellesley Hills,MA 02481