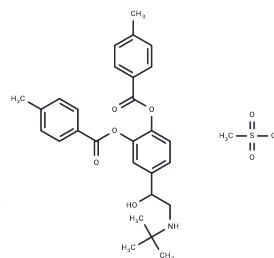


## Bitolterol mesylate

## Chemical Properties

CAS No. :	30392-41-7
Formula:	C <sub>29</sub> H <sub>35</sub> N <sub>0</sub> O <sub>8</sub> S
Molecular Weight:	557.66
Storage:	Powder: -20°C for 3 years   In solvent: -80°C for 1 year Actual storage temperature shall be subject to the COA.



## Biological Description

Description	Bitolterol mesylate is a Bronchodilator.
Targets(IC50)	Others

## Preparing Stock Solutions

	1mg	5mg	10mg
1 mM	1.7932 mL	8.966 mL	17.9321 mL
5 mM	0.3586 mL	1.7932 mL	3.5864 mL
10 mM	0.1793 mL	0.8966 mL	1.7932 mL
50 mM	0.0359 mL	0.1793 mL	0.3586 mL

Please select the appropriate solvent to prepare the stock solution, according to the solubility of the product in different solvents. Please use it as soon as possible.

Note: The dilution table applies only to solid products. For liquid products, please calculate the stock solution based on the stated concentration and/or density.

## Reference

- Nathan RA, Bernstein IL, Bronsky EA, Bush RK, Chervinsky P, Condemi JJ, Dockhorn RJ, Pinnaas JL, Repsher LH. Comparison of the bronchodilator effects of nebulized bitolterol mesylate and isoproterenol hydrochloride in steroid-dependent asthma. *J Allergy Clin Immunol.* 1987 May;79(5):822-9. PubMed PMID: 3571773.
- Nathan RA, Bodman SF, Storms WW, Mingo TS. Bitolterol mesylate aerosol in adults with steroid-dependent asthma: a comparison with isoproterenol hydrochloride aerosol. *Ann Allergy.* 1986 Jun;56(6):494-9. PubMed PMID: 3717716.
- Kemp JP, Pinnaas JL, Tinkelman DG, Meltzer EO, Campbell SC, Orgel HA, Welch MJ, Mingo TS. Comparison of bronchodilator responses with bitolterol mesylate solution with the use of two different nebulizer systems in asthma. *J Allergy Clin Immunol.* 1986 Mar;77(3):509-15. PubMed PMID: 3950254.
- Bierman CW, Kemp JP, Nathan RA. Efficacy and safety of inhaled bitolterol mesylate via metered-dose inhaler in children with asthma. *Ann Allergy Asthma Immunol.* 1996 Jan;76(1):27-35. PubMed PMID: 8564625.

**Inhibitor · Natural Compounds · Compound Libraries · Recombinant Proteins**

This product is for Research Use Only · Not for Human or Veterinary or Therapeutic Use

Tel:781-999-4286 E\_mail:info@targetmol.com Address:34 Washington Street,Wellesley Hills,MA 02481