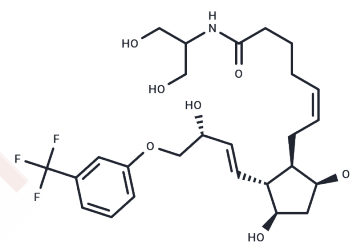


## Fluprostenol serinol amide

## Chemical Properties

|                   |   |
|-------------------|---|
| CAS No. :         | 1176658-85-7  |
| Formula:          | C <sub>26</sub> H <sub>36</sub> F <sub>3</sub> N <sub>1</sub> O <sub>7</sub>  |
| Molecular Weight: | 531.569   |
| Storage:          | Powder: -20°C for 3 years   In solvent: -80°C for 1 year<br>Actual storage temperature shall be subject to the COA. |



## Biological Description

|               |  |
|---------------|--|
| Description   | 2-arachidonyl glycerol (2-AG) exhibits cannabinoid (CB) agonist activity at the CB1 receptor, is an important endogenous monoglyceride species, and is thus considered to be the natural ligand for the CB1 receptor. 2-AG can also be metabolized by cyclooxygenase-2 and specific prostaglandin H2 (PGH2) isomerases to form PG 2-glycerol esters. Fluprostenol serinol amide (Flu-SA) is a stable analog of PGF <sub>2</sub> α 2-glycerol ester that has much greater stability. The biological activity of Flu-SA has not yet been determined. |
| Targets(IC50) | Others   |

## Solubility Information

|            |  |
|------------|--|
| Solubility | DMF: 30 mg/mL (56.44 mM),Sonication is recommended.<br>DMSO: 20 mg/mL (37.62 mM),Sonication is recommended.<br>PBS (pH 7.2): 10 mg/mL (18.81 mM),Sonication is recommended.<br>Ethanol: 30 mg/mL (56.44 mM),Sonication is recommended.<br>( < 1 mg/ml refers to the product slightly soluble or insoluble) |
|------------|--|

## Preparing Stock Solutions

|       | 1mg       | 5mg       | 10mg       |
|-------|-----------|-----------|------------|
| 1 mM  | 1.8812 mL | 9.4061 mL | 18.8122 mL |
| 5 mM  | 0.3762 mL | 1.8812 mL | 3.7624 mL  |
| 10 mM | 0.1881 mL | 0.9406 mL | 1.8812 mL  |
| 50 mM | 0.0376 mL | 0.1881 mL | 0.3762 mL  |

Please select the appropriate solvent to prepare the stock solution, according to the solubility of the product in different solvents. Please use it as soon as possible.

Note: The dilution table applies only to solid products. For liquid products, please calculate the stock solution based on the stated concentration and/or density.

**Inhibitor · Natural Compounds · Compound Libraries · Recombinant Proteins**

This product is for Research Use Only · Not for Human or Veterinary or Therapeutic Use

Tel:781-999-4286 E\_mail:info@targetmol.com Address:34 Washington Street,Wellesley Hills,MA 02481