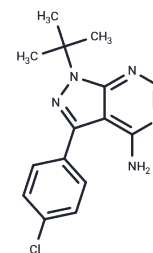


PP2

## Chemical Properties

CAS No. : 172889-27-9  
 Formula: C<sub>15</sub>H<sub>16</sub>ClN<sub>5</sub>  
 Molecular Weight: 301.77  
 Storage: Powder: -20°C for 3 years | In solvent: -80°C for 1 year  
 Actual storage temperature shall be subject to the COA.



## Biological Description

Description	PP2 (AG 1879, AGL 1879) is an effective inhibitor of Lck/Fyn (IC <sub>50</sub> : 4/5 nM), ~100-fold less potent to EGFR, inactive for ZAP-70, PKA and JAK2.
Targets(IC <sub>50</sub> )	EGFR, JAK, Src, Tyrosine Kinases
In vitro	In rats with focal cerebral ischemic damage, PP2 reduces the infarct area by approximately 50%. Compared to the control group, PP2 (1.5 mg/kg, i.p.) significantly improves neurological function scores in rats with this condition. Additionally, in SCID mice implanted with HT29 cells in the spleen, PP2 (5 mg/kg/day) not only decreases the primary tumor growth rate but also significantly reduces relative liver weight and the amount of liver metastasis, compared to the control group.
In vivo	PP2, at concentrations of 1-100 μM, dose-dependently inhibits the growth of the human colon (SW480, HT29, and PMCO1), liver (KYN-2, Li7, PLC/PRF/5, and HepG2), and breast (MDA-MB-468, MCF-7, and BT-474) cancer cells. At 5 μM concentration, PP2 suppresses the phosphorylation and signaling of RET/PTC1 oncoprotein in lysis of NIH3T3 and NIH-RET/PTC3 cells. Additionally, 5 μM PP2 inhibits serum-independent growth in transformed NIH3T3 fibroblasts, and human papillary thyroid carcinoma cell lines TPC1 and FB2 with spontaneous RET/PTC1 rearrangements, as well as hampers Type I collagen matrix invasion by TPC1 cells. At 10 μM, PP2 downregulates the expression levels of pSrc-Y416, pEGFR-Y845, and pEGFR-Y1173 in HeLa and SiHa cells, and regulates cell cycle arrest by upregulating p21(Cip1) and p27(Kip1), and downregulating cyclin A, cyclin-dependent kinases-2 and -4 (Cdk-2, -4) in HeLa cells, and cyclin B and Cdk-2 in SiHa cells. A 20 μM concentration of PP2 inhibits 40-50% of HT29 cell growth within an hour, reduces Src activity maintaining 35% inhibition for two days, and significantly promotes aggregation in most cancer cell lines (HT29, SW480, PMCO1, PLC/PRF/5, KYN-2, Li7, MCF-7, and MDA-MB-468) in an E-cadherin-dependent manner. In cancer cells, 20 μM PP2 boosts E-cadherin expression and its association with the actin cytoskeleton, as well as enhances α-catenin, β-catenin, and γ-catenin expression in HT29 cells, while in PLC/PRF/5 and MCF-7 cells, α-catenin protein levels remain unchanged, and β-catenin and γ-catenin levels slightly increase.
Kinase Assay	Immune complex enzyme assays: The acid-treated enolase is diluted 1:20 with 1× PBS before aliquoting 100 μL/well into a Nunc 96-well high protein binding assay plate. Assay wells are then aspirated; blocked with 0.5% bovine serum, 1× PBS for 1 h at 37 °C; and then washed five times with 300 μL of 1× PBS/well. The source of Lck is either LSTRA

Kinase Assay	<p>cells or Lck expressed in HeLa cells using a vaccinia expression system. FynT is expressed in HeLa cells using the vaccinia system. Cells (12.5x 10<sup>6</sup>/mL) are lysed in lysis buffer (20 mM Tris, pH 8.0, 150 mM NaCl, 0.5% Nonidet P-40, and 23 trypsin inhibitory units/mL aprotinin), and the lysates are clarified by centrifugation at 14,000 cpm for 15 min at 4 °C in an Eppendorf tube. The clarified lysates are then incubated with the appropriate anti-kinase antibody at 10 µg/mL for 2 h at 4 °C. Protein A-Sepharose beads are added to the antibody/lysate mixture at 250 µL/mL and allowed to incubate for 30 min at 4 °C. The beads are then washed twice in 1 mL of lysis buffer and twice in 1 mL of kinase buffer (25 mM HEPES, 3 mM MnCl<sub>2</sub>, 5 mM MgCl<sub>2</sub>, and 100 µM sodium orthovanadate) and resuspended to 50% (w/v) in kinase buffer. Twenty-five microliters of the bead suspension is added to each well of the enolase-coated 96-well high protein binding plate together with an appropriate concentration of compound and [<math>\gamma</math>-<sup>32</sup>P]ATP (25 µL/well of a 200 µCi/mL solution in kinase buffer). After incubation for 20 min at 20 °C, 60 µL of boiling 2x solubilization buffer containing 10 mM ATP is added to the assay wells to terminate the reactions. Thirty microliters of the samples is removed from the wells, boiled for 5 min, and run on a 7.5% SDS-polyacrylamide gel. The gels are subsequently dried and exposed to Kodak X-AR film. For quantitation, films are scanned using a Molecular Dynamics laser scanner, and the optical density of the major substrate band, enolase p46, is determined. In companion experiments for measuring the activity of compounds against Lck, the assay plate is washed with two wash cycles on a Skatron harvester using 50 mM EDTA, 1 mM ATP. Scintillation fluid (100 µL) is then added to the wells, and <sup>32</sup>P incorporation is measured using a micro-<math>\beta</math>-counter.</p>
Cell Research	<p>Cell viability is determined using an in vitro toxicology assay kit following the manufacturer's instructions. Cells are seeded in 96-well plates at day 0. Starting at day 1, cells are treated for 2 days with each of a series of increasing concentrations of PP2 (1 µM, 10 µM, and 100 µM). At the end of this period, cell proliferation is evaluated by a colorimetric assay based on the cleavage of 3-(4,5-dimethylthiazol-2-yl)-2,5-diphenyltetrazolium bromide by mitochondria dehydrogenase in viable cells, leading to formazan formation. This experiment is repeated three times with 10 determinations/tested concentration. (Only for Reference)</p>

### Solubility Information

Solubility	<p>DMSO: 25 mg/mL (82.84 mM), Sonication is recommended.          Ethanol: 2 mg/mL (6.63 mM), Sonication is recommended.          (&lt; 1 mg/ml refers to the product slightly soluble or insoluble)</p>
In vivo Formulation	<p>10% DMSO+90% Corn Oil: 3.3 mg/mL (10.94 mM), Sonication is recommended.  <i>Please add the solvents sequentially, clarifying the solution as much as possible before adding the next one. Dissolve by heating and/or sonication if necessary. Working solution is recommended to be prepared and used immediately. The formulation provided above is for reference purposes only. In vivo formulations may vary and should be modified based on specific experimental conditions.</i></p>

### Preparing Stock Solutions

	1mg	5mg	10mg
1 mM	3.3138 mL	16.5689 mL	33.1378 mL
5 mM	0.6628 mL	3.3138 mL	6.6276 mL
10 mM	0.3314 mL	1.6569 mL	3.3138 mL
50 mM	0.0663 mL	0.3314 mL	0.6628 mL

Please select the appropriate solvent to prepare the stock solution, according to the solubility of the product in different solvents. Please use it as soon as possible.

Note: The dilution table applies only to solid products. For liquid products, please calculate the stock solution based on the stated concentration and/or density.

### Reference

Hanke JH, et al. J Biol Chem, 1996, 271(2), 695-701.

Zheng T, Wang H Y, Chen Y, et al. Src Activation Aggravates Podocyte Injury in Diabetic Nephropathy via Suppression of FUNDC1-Mediated Mitophagy. Frontiers in Pharmacology. 2022, 13: 897046-897046

Liu K, Hao Z, Zheng H, et al. Repurposing of rilpivirine for preventing platelet  $\beta_3$  integrin-dependent thrombosis by targeting c-Src active autophosphorylation. Thrombosis Research. 2023

Karni R, et al. FEBS Lett, 2003, 537(1-3), 47-52.

Nam JS, et al. Clin Cancer Res, 2002, 8(7), 2430-2436.

Kong L, et al. Mol Cell Biochem, 2011, 348(1-2), 11-19.

Lenmyr F, et al. Acta Neurol Scand, 2004, 110(3), 175-179.

Inoue A, et al. Phosphorylation of NMDA receptor GluN2B subunit at Tyr1472 is important for trigeminal processing of itch. Eur J Neurosci. 2016 Oct;44(7):2474-2482.

**Inhibitor · Natural Compounds · Compound Libraries · Recombinant Proteins**

This product is for Research Use Only · Not for Human or Veterinary or Therapeutic Use

Tel: 781-999-4286 E\_mail: info@targetmol.com Address: 34 Washington Street, Wellesley Hills, MA 02481