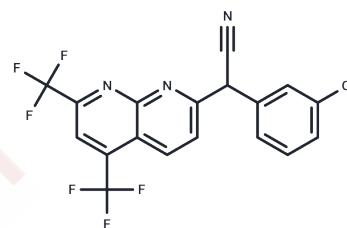


AMDE-1

Chemical Properties

CAS No. :	478043-30-0
Formula:	C ₁₈ H ₈ ClF ₆ N ₃
Molecular Weight:	415.72
Storage:	Powder: -20°C for 3 years In solvent: -80°C for 1 year Actual storage temperature shall be subject to the COA.



Biological Description

Description	AMDE-1 is an autophagy modulator and triggers autophagy in an Atg5-dependent manner. AMDE-1 recruits Atg16 to the pre-autophagosomal site and causes LC3 lipidation.
Targets(IC50)	AMPK, Autophagy, ATG

Solubility Information

Solubility	DMSO: 55 mg/mL (132.3 mM), Sonication is recommended. (< 1 mg/ml refers to the product slightly soluble or insoluble)
In vivo Formulation	10% DMSO+90% Corn Oil: 2.5 mg/mL (6.01 mM), Sonication is recommended. <i>Please add the solvents sequentially, clarifying the solution as much as possible before adding the next one. Dissolve by heating and/or sonication if necessary. Working solution is recommended to be prepared and used immediately. The formulation provided above is for reference purposes only. In vivo formulations may vary and should be modified based on specific experimental conditions.</i>

Preparing Stock Solutions

	1mg	5mg	10mg
1 mM	2.4055 mL	12.0273 mL	24.0547 mL
5 mM	0.4811 mL	2.4055 mL	4.8109 mL
10 mM	0.2405 mL	1.2027 mL	2.4055 mL
50 mM	0.0481 mL	0.2405 mL	0.4811 mL

Please select the appropriate solvent to prepare the stock solution, according to the solubility of the product in different solvents. Please use it as soon as possible.

Note: The dilution table applies only to solid products. For liquid products, please calculate the stock solution based on the stated concentration and/or density.

Reference

Gao Y, et al. Golgi-associated LC3 lipidation requires V-ATPase in noncanonical autophagy. Cell Death Dis. 2016 Aug 11;7(8):e2330.

Li M, et al. AMDE-1 is a dual function chemical for autophagy activation and inhibition. PLoS One. 2015 Apr 20;10(3):e0122083.

Inhibitor · Natural Compounds · Compound Libraries · Recombinant Proteins

This product is for Research Use Only· Not for Human or Veterinary or Therapeutic Use

Tel:781-999-4286 E_mail:info@targetmol.com Address:34 Washington Street,Wellesley Hills,MA 02481