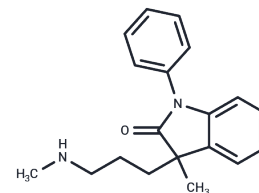


## Amedalin Hydrochloride

## Chemical Properties

CAS No. :	22232-73-1
Formula:	C <sub>19</sub> H <sub>23</sub> ClN <sub>2</sub> O
Molecular Weight:	330.85
Storage:	Powder: -20°C for 3 years   In solvent: -80°C for 1 year Actual storage temperature shall be subject to the COA.

HCl



## Biological Description

Description	Amedalin Hydrochloride is an antidepressant and is a bioactive chemical.
Targets(IC50)	Others

## Preparing Stock Solutions

	1mg	5mg	10mg
1 mM	3.0225 mL	15.1126 mL	30.2252 mL
5 mM	0.6045 mL	3.0225 mL	6.045 mL
10 mM	0.3023 mL	1.5113 mL	3.0225 mL
50 mM	0.0605 mL	0.3023 mL	0.6045 mL

Please select the appropriate solvent to prepare the stock solution, according to the solubility of the product in different solvents. Please use it as soon as possible.

Note: The dilution table applies only to solid products. For liquid products, please calculate the stock solution based on the stated concentration and/or density.

### Reference

Song S, Chen F, Xing X, Ren M, Ma Q, Xie Y, Tang Q, Luo J. Concurrent quantification and comparative pharmacokinetic analysis of bioactive compounds in the Herba Ephedrae-Semen Armeniacae Amarum herb pair. *J Pharm Biomed Anal.* 2015 May 10;109:67-73. doi: 10.1016/j.jpba.2015.02.004. Epub 2015 Feb 14. PubMed PMID: 25766850.

Zheng M, Zhou H, Wan H, Chen YL, He Y. Effects of herbal drugs in Mahuang decoction and their main components on intestinal transport characteristics of Ephedra alkaloids evaluated by a Caco-2 cell monolayer model. *J Ethnopharmacol.* 2015 Apr 22;164:22-9. doi: 10.1016/j.jep.2015.01.043. Epub 2015 Feb 7. PubMed PMID: 25660335.

Yang DB, Tong Y, Ma ZS, Wang L, Dong MH, Li YL, Wang JY. [Simultaneous determination of ephedrine hydrochloride, D-pseudoephedrine and amygdalin in xiao'er pingchuan qutan granule by HPLC]. *Zhongguo Zhong Yao Za Zhi.* 2013 Mar;38(5):687-90. Chinese. PubMed PMID: 23724676.

Liu L, Duan JA, Tang Y, Guo J, Yang N, Ma H, Shi X. Taoren-Honghua herb pair and its main components promoting blood circulation through influencing on hemorheology, plasma coagulation and platelet aggregation. *J Ethnopharmacol.* 2012 Jan 31;139(2):381-7. doi: 10.1016/j.jep.2011.11.016. Epub 2011 Nov 20. PubMed PMID: 22123200.

**Inhibitor · Natural Compounds · Compound Libraries · Recombinant Proteins**

This product is for Research Use Only · Not for Human or Veterinary or Therapeutic Use

Tel:781-999-4286 E\_mail:info@targetmol.com Address:34 Washington Street,Wellesley Hills,MA 02481