

Pinoresinol dimethyl ether

Chemical Properties

CAS No. : 29106-36-3

Formula: C₂₂H₂₆O₆

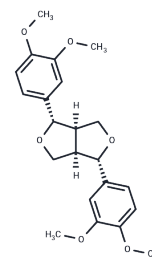
Molecular Weight: 386.44

Store at low temperature, Keep away from direct sunlight

Storage:

Powder: -20°C for 3 years | In solvent: -80°C for 1 year

Actual storage temperature shall be subject to the COA.



Biological Description

Description	Pinoresinol dimethyl ether is a nonphenolic furan lignan isolated from the stem bark of <i>Magnolia kobus</i> with neurological activity. It stimulates upstream MAPK, PKC and PKA pathways and induces neural protrusion growth in PC12 cells.
Targets(IC50)	NO Synthase, p38 MAPK, PKA, PKC

Solubility Information

Solubility	DMSO: 250 mg/mL (646.93 mM), Sonication is recommended. (< 1 mg/ml refers to the product slightly soluble or insoluble)
In vivo Formulation	10% DMSO+40% PEG300+5% Tween 80+45% Saline: 2 mg/mL (5.18 mM), Sonication is recommended. <i>Please add the solvents sequentially, clarifying the solution as much as possible before adding the next one. Dissolve by heating and/or sonication if necessary. Working solution is recommended to be prepared and used immediately. The formulation provided above is for reference purposes only. In vivo formulations may vary and should be modified based on specific experimental conditions.</i>

Preparing Stock Solutions

	1mg	5mg	10mg
1 mM	2.5877 mL	12.9386 mL	25.8772 mL
5 mM	0.5175 mL	2.5877 mL	5.1754 mL
10 mM	0.2588 mL	1.2939 mL	2.5877 mL
50 mM	0.0518 mL	0.2588 mL	0.5175 mL

Please select the appropriate solvent to prepare the stock solution, according to the solubility of the product in different solvents. Please use it as soon as possible.

Note: The dilution table applies only to solid products. For liquid products, please calculate the stock solution based on the stated concentration and/or density.

Reference

D, Chávez, Acevedo L A , Mata R , . Tryptamine derived amides and acetogenins from the seeds of Rollinia mucosa. [J]. Journal of Natural Products, 1999, 62(8):1119-1122.

Inhibitor · Natural Compounds · Compound Libraries · Recombinant Proteins

This product is for Research Use Only · Not for Human or Veterinary or Therapeutic Use

Tel:781-999-4286 E_mail:info@targetmol.com Address:34 Washington Street,Wellesley Hills,MA 02481