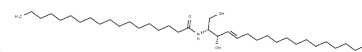


## C18 L-erythro Ceramide (d18:1/18:0)

### Chemical Properties

|                   |  |
|-------------------|--|
| CAS No. :         | 252039-52-4  |
| Formula:          | C36H71NO3  |
| Molecular Weight: | 565.95   |
| Storage:          | Store at low temperature<br>Powder: -20°C for 3 years   In solvent: -80°C for 1 year<br><small>Actual storage temperature shall be subject to the COA.</small> |



### Biological Description

|               |  |
|---------------|--|
| Description   | C18 L-erythro Ceramide (d18:1/18:0) significantly reduced extracellular A $\beta$ levels and can be used to study Alzheimer's disease. |
| Targets(IC50) | Beta Amyloid,Others  |

### Solubility Information

|            |   |
|------------|---|
| Solubility | DMSO: 2 mg/mL (3.53 mM),Sonication is recommended.<br>(< 1 mg/ml refers to the product slightly soluble or insoluble) |
|------------|---|

#### Preparing Stock Solutions

|       | 1mg       | 5mg       | 10mg       |
|-------|-----------|-----------|------------|
| 1 mM  | 1.7669 mL | 8.8347 mL | 17.6694 mL |
| 5 mM  | 0.3534 mL | 1.7669 mL | 3.5339 mL  |
| 10 mM | 0.1767 mL | 0.8835 mL | 1.7669 mL  |
| 50 mM | 0.0353 mL | 0.1767 mL | 0.3534 mL  |

Please select the appropriate solvent to prepare the stock solution, according to the solubility of the product in different solvents. Please use it as soon as possible.

Note: The dilution table applies only to solid products. For liquid products, please calculate the stock solution based on the stated concentration and/or density.

#### Reference

- Kim MJ,et al. Acid ceramidase inhibition ameliorates  $\alpha$ -synuclein accumulation upon loss of GBA1 function. Hum Mol Genet. 2018 Jun 1;27(11):1972-1988.
- Abeytunga DT,et al. Presence of unsaturated sphingomyelins and changes in their composition during the life cycle of the moth Manduca sexta. J Lipid Res. 2004 Jul;45(7):1221-31.

**Inhibitor · Natural Compounds · Compound Libraries · Recombinant Proteins**

This product is for Research Use Only · Not for Human or Veterinary or Therapeutic Use

Tel:781-999-4286 E\_mail:info@targetmol.com Address:34 Washington Street,Wellesley Hills,MA 02481