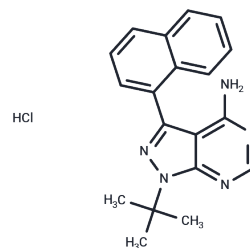


1-Naphthyl PP1 hydrochloride

Chemical Properties

CAS No. :	956025-47-1
Formula:	C ₁₉ H ₂₀ ClN ₅
Molecular Weight:	353.85
Storage:	Powder: -20°C for 3 years In solvent: -80°C for 1 year Actual storage temperature shall be subject to the COA.



Biological Description

Description	1-Naphthyl PP1 hydrochloride (1-NA-PP 1 hydrochloride) is a selective inhibitor of Src family kinases v-Src.
Targets(IC50)	Src

Solubility Information

Solubility	DMSO: 73 mg/mL (206.3 mM), Sonication is recommended. (< 1 mg/ml refers to the product slightly soluble or insoluble)
------------	--

Preparing Stock Solutions

	1mg	5mg	10mg
1 mM	2.8261 mL	14.1303 mL	28.2606 mL
5 mM	0.5652 mL	2.8261 mL	5.6521 mL
10 mM	0.2826 mL	1.413 mL	2.8261 mL
50 mM	0.0565 mL	0.2826 mL	0.5652 mL

Please select the appropriate solvent to prepare the stock solution, according to the solubility of the product in different solvents. Please use it as soon as possible.

Note: The dilution table applies only to solid products. For liquid products, please calculate the stock solution based on the stated concentration and/or density.

Reference

- Bishop A C , Ubersax J A , Petsch D T , et al. A chemical switch for inhibitor-sensitive alleles of any protein kinase[J]. Nature, 2000, 407(6802):395.
- Tandon M, Johnson J, Li Z, et al. New pyrazolopyrimidine inhibitors of protein kinase d as potent anticancer agents for prostate cancer cells[J]. PLoS One. 2013 Sep 23;8(9):e75601.

Inhibitor · Natural Compounds · Compound Libraries · Recombinant Proteins

This product is for Research Use Only · Not for Human or Veterinary or Therapeutic Use

Tel:781-999-4286 E_mail:info@targetmol.com Address:34 Washington Street,Wellesley Hills,MA 02481