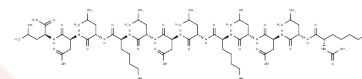


KLD-12

Chemical Properties

CAS No. : 800379-47-9
 Formula: C₆₈H₁₂₂N₁₆O₁₉
 Molecular Weight: 1467.817
 Storage: Keep away from moisture
 Powder: -20°C for 3 years | In solvent: -80°C for 1 year
 Actual storage temperature shall be subject to the COA.



Biological Description

Description	KLD-12, a 12-residue self-assembling peptide, displays properties that promote chondrogenic differentiation of bone marrow stromal cells (BMSCs). Moreover, KLD-12 hydrogel can effectively fill full-thickness osteochondral defects in their original location, leading to improved cartilage repair.
-------------	---

Preparing Stock Solutions

	1mg	5mg	10mg
1 mM	0.6813 mL	3.4064 mL	6.8128 mL
5 mM	0.1363 mL	0.6813 mL	1.3626 mL
10 mM	0.0681 mL	0.3406 mL	0.6813 mL
50 mM	0.0136 mL	0.0681 mL	0.1363 mL

Please select the appropriate solvent to prepare the stock solution, according to the solubility of the product in different solvents. Please use it as soon as possible.

Note: The dilution table applies only to solid products. For liquid products, please calculate the stock solution based on the stated concentration and/or density.

Reference

Tripathi JK, et, al. Variants of self-assembling peptide, KLD-12 that show both rapid fracture healing and antimicrobial properties. *Biomaterials*. 2015 Jul;56:92-103.

Kisiday J, et, al. Self-assembling peptide hydrogel fosters chondrocyte extracellular matrix production and cell division: implications for cartilage tissue repair. *Proc Natl Acad Sci U S A*. 2002 Jul 23;99(15):9996-10001.

Inhibitor · Natural Compounds · Compound Libraries · Recombinant Proteins

This product is for Research Use Only · Not for Human or Veterinary or Therapeutic Use

Tel:781-999-4286 E_mail:info@targetmol.com Address:34 Washington Street,Wellesley Hills,MA 02481