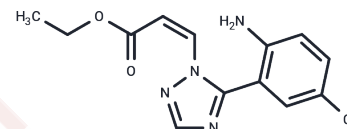


PKF050-638

Chemical Properties

CAS No. : 528893-52-9
 Formula: C₁₃H₁₃ClN₄O₂
 Molecular Weight: 292.72
 Storage: Powder: -20°C for 3 years | In solvent: -80°C for 1 year
 Actual storage temperature shall be subject to the COA.



Biological Description

Description	PKF050-638 inhibits the CRM1-mediated Rev nuclear export by disrupting CRM1-NES interaction. PKF050-638 is an effective and selective inhibitor of HIV-1 Rev (IC ₅₀ =0.04 μM).
Targets(IC ₅₀)	HIV Protease, CRM1
In vitro	PKF050-638 (7.5 μM; 1 hour) is interfering with the CRM1-mediated nuclear export machinery. HeLa cells are cotransfected with the BFP-tagged Rev protein and the GFP-tagged hCRM1. Upon treatment with PKF050-638, this Rev-dependent hCRM1 nucleolar localization is abolished after 60 min, and PKF050-638 does not affect the Rev nucleolar distribution. PKF050-638 (7.5 μM; 4 hours) restores the inhibition of export in pRev14-GFP-transfected cells. In cells incubated with PKF050-638, most of the Rev14-GFP is localized in the nucleus and nucleolus. Whereas in untreated cells, Rev14-GFP is still in the cytoplasm. This result displays that the majority of PKF050-638-treated cells are able to reverse completely the inhibitory effects of the agent. PKF050-638 (5 μM; 2 hours) inhibits nuclear export of rev, in addition, the Rev14-GFP mutant accumulates in the nucleus indicating that the NES of Rev is a part of Rev required for export inhibition by PKF050-638 [1].

Preparing Stock Solutions

	1mg	5mg	10mg
1 mM	3.4162 mL	17.0812 mL	34.1623 mL
5 mM	0.6832 mL	3.4162 mL	6.8325 mL
10 mM	0.3416 mL	1.7081 mL	3.4162 mL
50 mM	0.0683 mL	0.3416 mL	0.6832 mL

Please select the appropriate solvent to prepare the stock solution, according to the solubility of the product in different solvents. Please use it as soon as possible.

Note: The dilution table applies only to solid products. For liquid products, please calculate the stock solution based on the stated concentration and/or density.

Reference

Daelemans D, et al. A synthetic HIV-1 Rev inhibitor interfering with the CRM1-mediated nuclear export. Proc Natl Acad Sci U S A. 2002 Oct 29;99(22):14440-5. Epub 2002 Oct 9.

Inhibitor · Natural Compounds · Compound Libraries · Recombinant Proteins

This product is for Research Use Only · Not for Human or Veterinary or Therapeutic Use

Tel:781-999-4286 E_mail:info@targetmol.com Address:34 Washington Street,Wellesley Hills,MA 02481