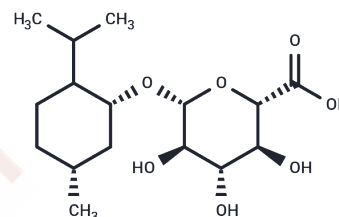


Menthol glucuronide

Chemical Properties

CAS No. :	79466-08-3
Formula:	C ₁₆ H ₂₈ O ₇
Molecular Weight:	332.39
Storage:	Powder: -20°C for 3 years In solvent: -80°C for 1 year Actual storage temperature shall be subject to the COA.



Biological Description

Description	Menthol glucuronide is a metabolite of L-(-)-Menthol, the natural form of Methanol.
Targets(IC50)	Others,Drug Metabolite

Preparing Stock Solutions

	1mg	5mg	10mg
1 mM	3.0085 mL	15.0426 mL	30.0851 mL
5 mM	0.6017 mL	3.0085 mL	6.017 mL
10 mM	0.3009 mL	1.5043 mL	3.0085 mL
50 mM	0.0602 mL	0.3009 mL	0.6017 mL

Please select the appropriate solvent to prepare the stock solution, according to the solubility of the product in different solvents. Please use it as soon as possible.

Note: The dilution table applies only to solid products. For liquid products, please calculate the stock solution based on the stated concentration and/or density.

Reference

Valente A, Carrillo AE, Tzatzarakis MN, Vakonaki E, Tsatsakis AM, Kenny GP, Koutedakis Y, Jamurtas AZ, Flouris AD. The absorption and metabolism of a single L-menthol oral versus skin administration: Effects on thermogenesis and metabolic rate. *Food Chem Toxicol.* 2015 Dec;86:262-73. doi: 10.1016/j.fct.2015.09.018. Epub 2015 Sep 30. PubMed PMID: 26429629.

Kaffenberger RM, Doyle MJ. Determination of menthol and menthol glucuronide in human urine by gas chromatography using an enzyme-sensitive internal standard and flame ionization detection. *J Chromatogr.* 1990 Apr 27;527(1):59-66. PubMed PMID: 2365793.

Peat J, Frazee C, Kearns G, Garg U. Determination of Menthol in Plasma and Urine by Gas Chromatography/Mass Spectrometry (GC/MS). *Methods Mol Biol.* 2016;1383:205-11. doi: 10.1007/978-1-4939-3252-8_22. PubMed PMID: 26660189.

Nolen HW 3rd, Friend DR. Menthol-beta-D-glucuronide: a potential prodrug for treatment of the irritable bowel syndrome. *Pharm Res.* 1994 Dec;11(12):1707-11. PubMed PMID: 7899232.

Inhibitor · Natural Compounds · Compound Libraries · Recombinant Proteins

This product is for Research Use Only · Not for Human or Veterinary or Therapeutic Use

Tel:781-999-4286 E_mail:info@targetmol.com Address:34 Washington Street,Wellesley Hills,MA 02481