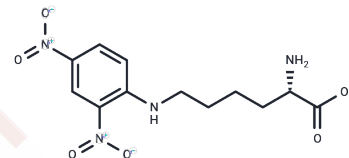


## epsilon-Dinitrophenyllysine

## Chemical Properties

CAS No. :	1094-76-4
Formula:	C <sub>12</sub> H <sub>16</sub> N <sub>4</sub> O <sub>6</sub>
Molecular Weight:	312.28
Storage:	Powder: -20°C for 3 years   In solvent: -80°C for 1 year Actual storage temperature shall be subject to the COA.



## Biological Description

Description	epsilon-Dinitrophenyllysine is a bioactive chemical.
Targets(IC50)	Others

## Preparing Stock Solutions

	1mg	5mg	10mg
1 mM	3.2023 mL	16.0113 mL	32.0225 mL
5 mM	0.6405 mL	3.2023 mL	6.4045 mL
10 mM	0.3202 mL	1.6011 mL	3.2023 mL
50 mM	0.064 mL	0.3202 mL	0.6405 mL

Please select the appropriate solvent to prepare the stock solution, according to the solubility of the product in different solvents. Please use it as soon as possible.

Note: The dilution table applies only to solid products. For liquid products, please calculate the stock solution based on the stated concentration and/or density.

## Reference

- Hatz RA, Bloch KJ, Harmatz PR, Gonnella PA, Ariniello PD, Walker WA, Kleinman RE. Divalent hapten-induced intestinal anaphylaxis in the mouse enhances macromolecular uptake from the stomach. *Gastroenterology*. 1990 Apr;98(4):894-900. PubMed PMID: 2107115.
- Iyer PK, Ganu UK, Sahasrabudhe MB. Rapid detoxification of epsilon-dinitrophenylated-lysine of dinitrophenylated leucocytes, the anti-leukaemic immunogen. *Indian J Med Res*. 1979 Oct;70:663-8. PubMed PMID: 120315.
- Kulin S, Kishore R, Hubbard JB, Helmerson K. Real-time measurement of spontaneous antigen-antibody dissociation. *Biophys J*. 2002 Oct;83(4):1965-73. PubMed PMID: 12324415; PubMed Central PMCID: PMC1302286.
- Nowak-Lovato KL, Rector KD. Targeted surface-enhanced Raman scattering nanosensors for whole-cell pH imagery. *Appl Spectrosc*. 2009 Apr;63(4):387-95. doi: 10.1366/000370209787944406. PubMed PMID: 19366503.

**Inhibitor · Natural Compounds · Compound Libraries · Recombinant Proteins**

This product is for Research Use Only · Not for Human or Veterinary or Therapeutic Use

Tel:781-999-4286 E\_mail:info@targetmol.com Address:34 Washington Street,Wellesley Hills,MA 02481