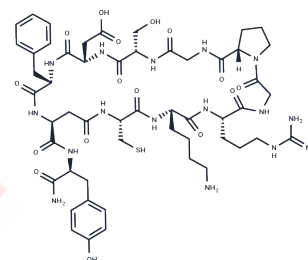


D-loop peptide, synthetic

Chemical Properties

CAS No. :	130304-73-3
Formula:	C53H76N16O16S
Molecular Weight:	1225.35
Storage:	Keep away from moisture Powder: -20°C for 3 years In solvent: -80°C for 1 year <small>Actual storage temperature shall be subject to the COA.</small>



Biological Description

Description	D-loop peptide, synthetic is an antigenic peptide. It cyclizes through a peptide bond between the side chain carboxylic group of Asp10 and the terminal amide of the peptide.
-------------	---

Preparing Stock Solutions

	1mg	5mg	10mg
1 mM	0.8161 mL	4.0805 mL	8.1609 mL
5 mM	0.1632 mL	0.8161 mL	1.6322 mL
10 mM	0.0816 mL	0.408 mL	0.8161 mL
50 mM	0.0163 mL	0.0816 mL	0.1632 mL

Please select the appropriate solvent to prepare the stock solution, according to the solubility of the product in different solvents. Please use it as soon as possible.

Note: The dilution table applies only to solid products. For liquid products, please calculate the stock solution based on the stated concentration and/or density.

Reference

Liu SA, Jiang RS, Wang WY, Lin JC. Somatic mutations in the D-loop of mitochondrial DNA in head and neck squamous cell carcinoma. *Head Neck*. 2015 Jun;37(6):878-83. doi: 10.1002/hed.23680. Epub 2014 Jun 27. PubMed PMID: 24976238.

Bellis C, Ashton KJ, Freney L, Blair B, Griffiths LR. A molecular genetic approach for forensic animal species identification. *Forensic Sci Int*. 2003 Jul 8;134(2-3):99-108. PubMed PMID: 12850402.

Del Bo R, Bordoni A, Martinelli Boneschi F, Crimi M, Sciacco M, Bresolin N, Scarlato G, Comi GP. Evidence and age-related distribution of mtDNA D-loop point mutations in skeletal muscle from healthy subjects and mitochondrial patients. *J Neurol Sci*. 2002 Oct 15;202(1-2):85-91. PubMed PMID: 12220698.

Montiel R, Malgosa A, Francalacci P. Authenticating ancient human mitochondrial DNA. *Hum Biol*. 2001 Oct;73(5):689-713. PubMed PMID: 11758690.

Inhibitor · Natural Compounds · Compound Libraries · Recombinant Proteins

This product is for Research Use Only · Not for Human or Veterinary or Therapeutic Use

Tel:781-999-4286 E_mail:info@targetmol.com Address:34 Washington Street,Wellesley Hills,MA 02481