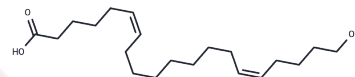


## 20-HEDE

## Chemical Properties

CAS No. :	240427-90-1
Formula:	C <sub>20</sub> H <sub>36</sub> O <sub>3</sub>
Molecular Weight:	324.50
Storage:	Powder: -20°C for 3 years   In solvent: -80°C for 1 year Actual storage temperature shall be subject to the COA.



## Biological Description

Description	20-HEDE (WIT 002) is an antagonist of 20-hydroxyeicosatetraenoic acid (20-HETE).
Targets(IC50)	Others,Cytochromes P450
In vitro	WIT 002 inhibits proliferation of 786-O and 769-P renal adenocarcinoma cells, but HET0016 and WIT 002 fail to inhibit proliferation of normal renal epithelial cells RPTC[2][3].
In vivo	The growth of tumors is significantly suppressed by WIT 002 administered daily to athymic nude mice implanted subcutaneously with cells 786-O. Tumor growth is inhibited by 84%±128%. It is of note that in these experiments WIT 002 treatment start only after the tumor is seeded for 7-14 days and is relatively large 0.1 cm. Thus, WIT 002 is effective at arresting the growth of a fairly advanced tumor[3].

## Preparing Stock Solutions

	1mg	5mg	10mg
1 mM	3.0817 mL	15.4083 mL	30.8166 mL
5 mM	0.6163 mL	3.0817 mL	6.1633 mL
10 mM	0.3082 mL	1.5408 mL	3.0817 mL
50 mM	0.0616 mL	0.3082 mL	0.6163 mL

Please select the appropriate solvent to prepare the stock solution, according to the solubility of the product in different solvents. Please use it as soon as possible.

Note: The dilution table applies only to solid products. For liquid products, please calculate the stock solution based on the stated concentration and/or density.

### Reference

Ming Yua . et al. Effects of a 20-HETE antagonist and agonists on cerebral vascular tone. Eur J Pharmacol. 2004 Feb 23;486(3):297-306.

Wei Yu, et al. Cytochrome P450  $\omega$ -hydroxylase promotes angiogenesis and metastasis by upregulation of VEGF and MMP-9 in non-small cell lung cancer. Cancer Chemother Pharmacol. 2011 Sep; 68(3): 619-29.

Anna Alexanian, et al. Down-regulation of 20-HETE Synthesis and Signaling Inhibits Renal Adenocarcinoma Cell Proliferation and Tumor Growth. Anticancer Res. 2009 October ; 29(10): 3819-3824.

**Inhibitor · Natural Compounds · Compound Libraries · Recombinant Proteins**

This product is for Research Use Only· Not for Human or Veterinary or Therapeutic Use

Tel:781-999-4286 E\_mail:info@targetmol.com Address:34 Washington Street,Wellesley Hills,MA 02481