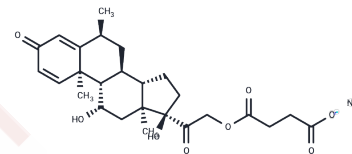


6 α -Methylprednisolone 21-hemisuccinate sodium salt

Chemical Properties

CAS No. :	2375-03-3
Formula:	C ₂₆ H ₃₃ NaO ₈
Molecular Weight:	496.53
Storage:	Powder: -20°C for 3 years In solvent: -80°C for 1 year Actual storage temperature shall be subject to the COA.



Biological Description

Description	6 α -Methylprednisolone 21-hemisuccinate sodium salt (Asmacortone), a water-soluble ester, is used for allergic, cardiac, and hypoxic emergencies.
Targets(IC50)	Glucocorticoid Receptor, Glucagon Receptor

Solubility Information

Solubility	DMSO: 18.33 mg/mL (36.92 mM), Sonication is recommended. (< 1 mg/ml refers to the product slightly soluble or insoluble)
In vivo Formulation	10% DMSO+40% PEG300+5% Tween-80+45% Saline: 1.5 mg/mL (3.02 mM), Sonication is recommended. <i>Please add the solvents sequentially, clarifying the solution as much as possible before adding the next one. Dissolve by heating and/or sonication if necessary. Working solution is recommended to be prepared and used immediately. The formulation provided above is for reference purposes only. In vivo formulations may vary and should be modified based on specific experimental conditions.</i>

Preparing Stock Solutions

	1mg	5mg	10mg
1 mM	2.014 mL	10.0699 mL	20.1398 mL
5 mM	0.4028 mL	2.014 mL	4.028 mL
10 mM	0.2014 mL	1.007 mL	2.014 mL
50 mM	0.0403 mL	0.2014 mL	0.4028 mL

Please select the appropriate solvent to prepare the stock solution, according to the solubility of the product in different solvents. Please use it as soon as possible.

Note: The dilution table applies only to solid products. For liquid products, please calculate the stock solution based on the stated concentration and/or density.

Reference

Owen HC, et al. Mol Cell Endocrinol. 2007 Jan 29;264(1-2):164-70.

Inhibitor · Natural Compounds · Compound Libraries · Recombinant Proteins

This product is for Research Use Only · Not for Human or Veterinary or Therapeutic Use

Tel:781-999-4286 E_mail:info@targetmol.com Address:34 Washington Street,Wellesley Hills,MA 02481