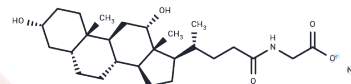


## Glycodeoxycholate Sodium

## Chemical Properties

CAS No. :	16409-34-0
Formula:	C <sub>26</sub> H <sub>42</sub> NNaO <sub>5</sub>
Molecular Weight:	471.61
Storage:	Powder: -20°C for 3 years   In solvent: -80°C for 1 year Actual storage temperature shall be subject to the COA.



## Biological Description

Description	The mechanism by which Glycodeoxycholate Sodium induces apoptosis in hepatocytes is related to DNA cleavage by endonucleases. It is a secondary bile acid produced by the action of enzymes present in the microflora of the colonic environment.
Targets(IC50)	Endogenous Metabolite

## Solubility Information

Solubility	DMSO: 250 mg/mL (530.1 mM),Sonication is recommended. (< 1 mg/ml refers to the product slightly soluble or insoluble)
In vivo Formulation	10% DMSO+40% PEG300+5% Tween 80+45% Saline: 2 mg/mL (4.24 mM),Sonication is recommended. <i>Please add the solvents sequentially, clarifying the solution as much as possible before adding the next one. Dissolve by heating and/or sonication if necessary. Working solution is recommended to be prepared and used immediately. The formulation provided above is for reference purposes only. In vivo formulations may vary and should be modified based on specific experimental conditions.</i>

## Preparing Stock Solutions

	1mg	5mg	10mg
1 mM	2.1204 mL	10.602 mL	21.204 mL
5 mM	0.4241 mL	2.1204 mL	4.2408 mL
10 mM	0.212 mL	1.0602 mL	2.1204 mL
50 mM	0.0424 mL	0.212 mL	0.4241 mL

Please select the appropriate solvent to prepare the stock solution, according to the solubility of the product in different solvents. Please use it as soon as possible.

Note: The dilution table applies only to solid products. For liquid products, please calculate the stock solution based on the stated concentration and/or density.

Reference

Kwo P, et al. Nuclear serine protease activity contributes to bile acid-induced apoptosis in hepatocytes. Am J Physiol. 1995 Apr;268(4 Pt 1):G613-21.

**Inhibitor · Natural Compounds · Compound Libraries · Recombinant Proteins**

This product is for Research Use Only · Not for Human or Veterinary or Therapeutic Use

Tel:781-999-4286 E\_mail:info@targetmol.com Address:34 Washington Street,Wellesley Hills,MA 02481