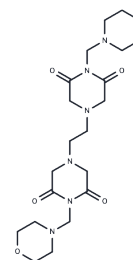


Bimolane

Chemical Properties

CAS No. :	74550-97-3
Formula:	C ₂₀ H ₃₂ N ₆ O ₆
Molecular Weight:	452.5
Storage:	Powder: -20°C for 3 years In solvent: -80°C for 1 year Actual storage temperature shall be subject to the COA.



Biological Description

Description	Bimolane is a topoisomerase II inhibitor.
Targets(IC50)	Topoisomerase

Solubility Information

Solubility	H ₂ O: < 1 mg/mL (insoluble or slightly soluble) DMSO: 1.13 mg/mL (2.5 mM), Sonication is recommended. (< 1 mg/ml refers to the product slightly soluble or insoluble)
------------	---

Preparing Stock Solutions

	1mg	5mg	10mg
1 mM	2.2099 mL	11.0497 mL	22.0994 mL
5 mM	0.442 mL	2.2099 mL	4.4199 mL
10 mM	0.221 mL	1.105 mL	2.2099 mL
50 mM	0.0442 mL	0.221 mL	0.442 mL

Please select the appropriate solvent to prepare the stock solution, according to the solubility of the product in different solvents. Please use it as soon as possible.

Note: The dilution table applies only to solid products. For liquid products, please calculate the stock solution based on the stated concentration and/or density.

Reference

Vuong MC, Hasegawa LS, Eastmond DA. A comparative study of the cytotoxic and genotoxic effects of ICRF-154 and bimolane, two catalytic inhibitors of topoisomerase II. *Mutat Res.* 2013 Jan 20;750(1-2):63-71.

Roy SK, Eastmond DA. Bimolane induces multiple types of chromosomal aberrations in human lymphocytes in vitro. *Mutat Res.* 2011 Dec 24;726(2):181-7.

Frantz CE, Smith H, Eades DM, Grosovsky AJ, Eastmond DA. Bimolane: in vitro inhibitor of human topoisomerase II. *Cancer Lett.* 1997 Dec 9;120(2):135-40.

Inhibitor · Natural Compounds · Compound Libraries · Recombinant Proteins

This product is for Research Use Only · Not for Human or Veterinary or Therapeutic Use

Tel:781-999-4286 E_mail:info@targetmol.com Address:34 Washington Street,Wellesley Hills,MA 02481