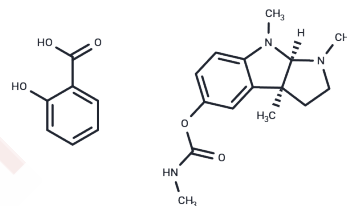


Physostigmine Salicylate

Chemical Properties

| | |
|-------------------|--|
| CAS No. : | 57-64-7 |
| Formula: | C ₂₂ H ₂₇ N ₃ O ₅ |
| Molecular Weight: | 413.48 |
| Storage: | Store at low temperature Powder: -20°C for 3 years In solvent: -80°C for 1 year <i>Actual storage temperature shall be subject to the COA.</i> |



Biological Description

| | |
|---------------|---|
| Description | Physostigmine, a parasympathomimetic alkaloid, is a reversible cholinesterase inhibitor. It extracts from the Calabar bean. |
| Targets(IC50) | AChR, Cholinesterase (ChE) |

Solubility Information

| | |
|---------------------|---|
| Solubility | DMSO: 125 mg/mL (302.31 mM), Sonication is recommended. (< 1 mg/ml refers to the product slightly soluble or insoluble) |
| In vivo Formulation | 10% DMSO+40% PEG300+5% Tween 80+45% Saline: 2 mg/mL (4.84 mM), Sonication is recommended. <i>Please add the solvents sequentially, clarifying the solution as much as possible before adding the next one. Dissolve by heating and/or sonication if necessary. Working solution is recommended to be prepared and used immediately. The formulation provided above is for reference purposes only. In vivo formulations may vary and should be modified based on specific experimental conditions.</i> |

Preparing Stock Solutions

| | 1mg | 5mg | 10mg |
|-------|-----------|------------|-----------|
| 1 mM | 2.4185 mL | 12.0925 mL | 24.185 mL |
| 5 mM | 0.4837 mL | 2.4185 mL | 4.837 mL |
| 10 mM | 0.2418 mL | 1.2092 mL | 2.4185 mL |
| 50 mM | 0.0484 mL | 0.2418 mL | 0.4837 mL |

Please select the appropriate solvent to prepare the stock solution, according to the solubility of the product in different solvents. Please use it as soon as possible.

Note: The dilution table applies only to solid products. For liquid products, please calculate the stock solution based on the stated concentration and/or density.

Reference

Lim DK, et al. Pharmacol Biochem Behav. 1988 Nov;31(3):627-31.

Inhibitor · Natural Compounds · Compound Libraries · Recombinant Proteins

This product is for Research Use Only · Not for Human or Veterinary or Therapeutic Use

Tel:781-999-4286 E_mail:info@targetmol.com Address:34 Washington Street,Wellesley Hills,MA 02481