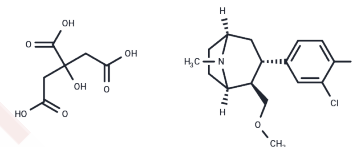


NS-2359 citrate

Chemical Properties

CAS No. :	195875-69-5
Formula:	C ₂₂ H ₂₉ Cl ₂ N ₂ O ₈
Molecular Weight:	506.37
Storage:	Powder: -20°C for 3 years In solvent: -80°C for 1 year Actual storage temperature shall be subject to the COA.



Biological Description

Description	NS-2359 is a serotonin-norepinephrine-dopamine reuptake inhibitor.
Targets(IC50)	Others

Preparing Stock Solutions

	1mg	5mg	10mg
1 mM	1.9748 mL	9.8742 mL	19.7484 mL
5 mM	0.395 mL	1.9748 mL	3.9497 mL
10 mM	0.1975 mL	0.9874 mL	1.9748 mL
50 mM	0.0395 mL	0.1975 mL	0.395 mL

Please select the appropriate solvent to prepare the stock solution, according to the solubility of the product in different solvents. Please use it as soon as possible.

Note: The dilution table applies only to solid products. For liquid products, please calculate the stock solution based on the stated concentration and/or density.

Reference

Learned S, Graff O, Roychowdhury S, Moate R, Krishnan KR, Archer G, Modell JG, Alexander R, Zamuner S, Lavergne A, Evoniuk G, Ratti E. Efficacy, safety, and tolerability of a triple reuptake inhibitor GSK372475 in the treatment of patients with major depressive disorder: two randomized, placebo- and active-controlled clinical trials. *J Psychopharmacol.* 2012 May;26(5):653-62. doi: 10.1177/0269881111424931. PubMed PMID: 22048884.

Wilens TE, Klint T, Adler L, West S, Wesnes K, Graff O, Mikkelsen B. A randomized controlled trial of a novel mixed monoamine reuptake inhibitor in adults with ADHD. *Behav Brain Funct.* 2008 Jun 13;4:24. doi: 10.1186/1744-9081-4-24. PubMed PMID: 18554401; PubMed Central PMCID: PMC2442604.

Inhibitor · Natural Compounds · Compound Libraries · Recombinant Proteins

This product is for Research Use Only · Not for Human or Veterinary or Therapeutic Use

Tel:781-999-4286 E_mail:info@targetmol.com Address:34 Washington Street,Wellesley Hills,MA 02481