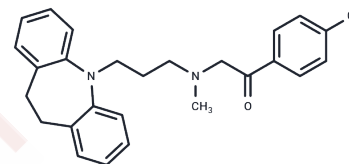


Lofepamine

Chemical Properties

CAS No. :	23047-25-8
Formula:	C ₂₆ H ₂₇ ClN ₂ O
Molecular Weight:	418.96
Storage:	Store at low temperature Powder: -20°C for 3 years In solvent: -80°C for 1 year <small>Actual storage temperature shall be subject to the COA.</small>



Biological Description

Description	Lofepamine (Leo 640) is a potent tricyclic antidepressant that is extensively metabolized to desipramine. It inhibits the serotonin and norepinephrine transporters by inhibiting neurons with K _d values of 70 and 5.4 nM, respectively, with weak antagonism of serotonin, histamine and muscarinic receptors.
Targets(IC50)	Others,5-HT Receptor,Adrenergic Receptor,Norepinephrine

Solubility Information

Solubility	DMSO: 48 mg/mL (114.57 mM),Sonication is recommended. (< 1 mg/ml refers to the product slightly soluble or insoluble)
In vivo Formulation	10% DMSO+90% Corn Oil: 2 mg/mL (4.77 mM),Sonication is recommended. <i>Please add the solvents sequentially, clarifying the solution as much as possible before adding the next one. Dissolve by heating and/or sonication if necessary. Working solution is recommended to be prepared and used immediately. The formulation provided above is for reference purposes only. In vivo formulations may vary and should be modified based on specific experimental conditions.</i>

Preparing Stock Solutions

	1mg	5mg	10mg
1 mM	2.3869 mL	11.9343 mL	23.8686 mL
5 mM	0.4774 mL	2.3869 mL	4.7737 mL
10 mM	0.2387 mL	1.1934 mL	2.3869 mL
50 mM	0.0477 mL	0.2387 mL	0.4774 mL

Please select the appropriate solvent to prepare the stock solution, according to the solubility of the product in different solvents. Please use it as soon as possible.

Note: The dilution table applies only to solid products. For liquid products, please calculate the stock solution based on the stated concentration and/or density.

Reference

Lancaster SG, et al. Lofepamine. A review of its pharmacodynamic and pharmacokinetic properties, and therapeutic efficacy in depressive illness. *Drugs*. 1989 Feb;37(2):123-40.

Cusack, B., Nelson, A., and Richelson, E. Binding of antidepressants to human brain receptors: Focus on newer generation compounds. *Psychopharmacology (Berl.)* 114(4), 559-565 (1994).

Inhibitor · Natural Compounds · Compound Libraries · Recombinant Proteins

This product is for Research Use Only · Not for Human or Veterinary or Therapeutic Use

Tel:781-999-4286 E_mail:info@targetmol.com Address:34 Washington Street,Wellesley Hills,MA 02481