

YM-17690

Chemical Properties

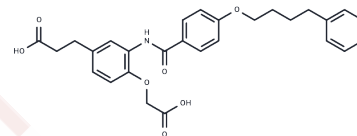
CAS No. : 108806-41-3

Formula: C₂₈H₂₉NO₇

Molecular Weight: 491.53

Storage: Powder: -20°C for 3 years | In solvent: -80°C for 1 year

Actual storage temperature shall be subject to the COA.



Biological Description

Description	YM-17690 is a non-analogous leukotriene agonist.
Targets(IC50)	Others,Leukotriene Receptor

Preparing Stock Solutions

	1mg	5mg	10mg
1 mM	2.0345 mL	10.1723 mL	20.3446 mL
5 mM	0.4069 mL	2.0345 mL	4.0689 mL
10 mM	0.2034 mL	1.0172 mL	2.0345 mL
50 mM	0.0407 mL	0.2034 mL	0.4069 mL

Please select the appropriate solvent to prepare the stock solution, according to the solubility of the product in different solvents. Please use it as soon as possible.

Note: The dilution table applies only to solid products. For liquid products, please calculate the stock solution based on the stated concentration and/or density.

Reference

- Tomioka K, Jackowski JT, Abraham WM. Characterization of sulfidopeptide leukotriene responses in sheep tracheal smooth muscle in vitro. *Can J Physiol Pharmacol.* 1991 Jun;69(6):805-11. PubMed PMID: 1655181.
- Catanese CA, Falcone RC, Aharony D. Guanyl-5'-yl-imidodiphosphate regulation of ligand binding to LTD₄ receptors on guinea pig lung membranes. *J Pharmacol Exp Ther.* 1989 Dec;251(3):846-51. PubMed PMID: 2557419.
- Tomioka K, Yamada T, Teramura K, Terai M, Hidaka K, Mase T, Hara H, Murase K. Isolated tissue and binding studies of YM-17690, a novel and non-analogous leukotriene agonist. *J Pharm Pharmacol.* 1987 Oct;39(10):819-24. PubMed PMID: 2891819.

Inhibitor · Natural Compounds · Compound Libraries · Recombinant Proteins

This product is for Research Use Only · Not for Human or Veterinary or Therapeutic Use

Tel:781-999-4286 E_mail:info@targetmol.com Address:34 Washington Street,Wellesley Hills,MA 02481