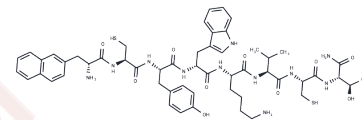


Angiopeptin

Chemical Properties

CAS No. :	113294-82-9
Formula:	C54H71N11O10S2
Molecular Weight:	1098.34
Storage:	Keep away from moisture Powder: -20°C for 3 years In solvent: -80°C for 1 year <i>Actual storage temperature shall be subject to the COA.</i>



Biological Description

Description	Angiopeptin is a synthetic octapeptide analog of somatostatin; suppresses accelerated transplant atherosclerosis in rabbit heart arteries.
Targets(IC50)	AChR,Somatostatin

Preparing Stock Solutions

	1mg	5mg	10mg
1 mM	0.9105 mL	4.5523 mL	9.1046 mL
5 mM	0.1821 mL	0.9105 mL	1.8209 mL
10 mM	0.091 mL	0.4552 mL	0.9105 mL
50 mM	0.0182 mL	0.091 mL	0.1821 mL

Please select the appropriate solvent to prepare the stock solution, according to the solubility of the product in different solvents. Please use it as soon as possible.

Note: The dilution table applies only to solid products. For liquid products, please calculate the stock solution based on the stated concentration and/or density.

Reference

- Meiser BM, Mueller M, Foegh M, Von Scheidt W, Reichart B. Short-term angiopeptin therapy and the incidence of graft vessel disease after heart transplantation. *J Heart Lung Transplant*. 2002 Dec;21(12):1264-73. PubMed PMID: 12490271.
- Kwok OH, Chow WH, Law TC, Chiu A, Ng W, Lam WF, Hong MK, Popma JJ. First human experience with angiopeptin-eluting stent: a quantitative coronary angiography and three-dimensional intravascular ultrasound study. *Catheter Cardiovasc Interv*. 2005 Dec;66(4):541-6. PubMed PMID: 16208695.
- Armstrong J, Gunn J, Arnold N, Malik N, Chan KH, Vick T, Stratford P, Cumberland DC, Holt CM. Angiopeptin-eluting stents: observations in human vessels and pig coronary arteries. *J Invasive Cardiol*. 2002 May;14(5):230-8. PubMed PMID: 11983942.
- Sidney EJ, Hampl V, Nelson DP, Archer SL, Foegh ML, Cathapermal SS, Weir EK. The somatostatin analog angiopeptin does not reduce chronic hypoxic pulmonary hypertension in rats. *Proc Soc Exp Biol Med*. 1996 Oct;213(1):43-9. PubMed PMID: 8820822.

Inhibitor · Natural Compounds · Compound Libraries · Recombinant Proteins

This product is for Research Use Only · Not for Human or Veterinary or Therapeutic Use

Tel:781-999-4286 E_mail:info@targetmol.com Address:34 Washington Street,Wellesley Hills,MA 02481