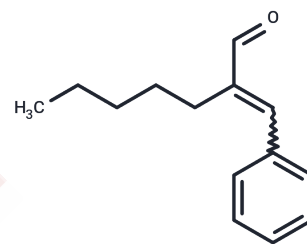


## alpha-Amyl cinnamaldehyde

## Chemical Properties

CAS No. :	122-40-7
Formula:	C <sub>14</sub> H <sub>18</sub> O
Molecular Weight:	202.29
Storage:	Powder: -20°C for 3 years   In solvent: -80°C for 1 year Actual storage temperature shall be subject to the COA.



## Biological Description

Description	alpha-Amyl cinnamaldehyde is a common additive in the perfume and cosmetic industry as an aroma substance.
Targets(IC50)	Others,CETP

## Solubility Information

Solubility	DMSO: Soluble, (< 1 mg/ml refers to the product slightly soluble or insoluble)
------------	---

## Preparing Stock Solutions

	1mg	5mg	10mg
1 mM	4.9434 mL	24.717 mL	49.434 mL
5 mM	0.9887 mL	4.9434 mL	9.8868 mL
10 mM	0.4943 mL	2.4717 mL	4.9434 mL
50 mM	0.0989 mL	0.4943 mL	0.9887 mL

Please select the appropriate solvent to prepare the stock solution, according to the solubility of the product in different solvents. Please use it as soon as possible.

Note: The dilution table applies only to solid products. For liquid products, please calculate the stock solution based on the stated concentration and/or density.

### Reference

Placzek M, Frömel W, Eberlein B, Gilbertz KP, Przybilla B. Evaluation of phototoxic properties of fragrances. *Acta Derm Venereol.* 2007;87(4):312-6. PubMed PMID: 17598033.

Elahi EN, Wright Z, Hinselwood D, Hotchkiss SA, Basketter DA, Pease CK. Protein binding and metabolism influence the relative skin sensitization potential of cinnamic compounds. *Chem Res Toxicol.* 2004 Mar;17(3):301-10. PubMed PMID: 15025500.

Sieben S, Hertl M, Al Masaoudi T, Merk HF, Blömeke B. Characterization of T cell responses to fragrances. *Toxicol Appl Pharmacol.* 2001 May 1;172(3):172-8. PubMed PMID: 11312644.

Bárány E, Lodén M. Content of fragrance mix ingredients and customer complaints of cosmetic products. *Am J Contact Dermat.* 2000 Jun;11(2):74-9. PubMed PMID: 10908174.

**Inhibitor · Natural Compounds · Compound Libraries · Recombinant Proteins**

This product is for Research Use Only · Not for Human or Veterinary or Therapeutic Use

Tel:781-999-4286 E\_mail:info@targetmol.com Address:34 Washington Street,Wellesley Hills,MA 02481