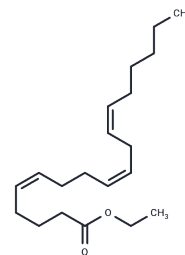


Pinolenic Acid ethyl ester

Chemical Properties

CAS No. :	493015-74-0
Formula:	C ₂₀ H ₃₄ O ₂
Molecular Weight:	306.49
Storage:	Powder: -20°C for 3 years In solvent: -80°C for 1 year Actual storage temperature shall be subject to the COA.



Biological Description

Description	Pinolenic acid is a polyunsaturated fatty acid found in Korean pine (<i>Pinus orientalis</i>) and maritime pine (<i>Pinus pinaster</i>) seed oils, which exhibit lipid-lowering properties. In transgenic mice expressing human ApoA1, a diet containing maritime pine seed oil (MPSO) reduced high-density lipoprotein and ApoA1 levels and diminished cholesterol efflux in vitro. Korean pine seed oil supplements may aid in reducing obesity by decreasing appetite, as evidenced by increased levels of satiety hormones CCK and GLP-1 and reduced desire to eat. Pinolenic acid, which is not metabolically converted to arachidonic acid, can lower arachidonic acid levels in the phosphatidylinositol fraction of HepG2 cells from 15.9% to 7.0%. The neutral, more lipophilic form of pinolenic acid is pinolenic acid ethyl ester.
Targets(IC50)	Others

Solubility Information

Solubility	DMF: 30 mg/mL (97.88 mM),Sonication is recommended. DMSO: 30 mg/mL (97.88 mM),Sonication is recommended. Ethanol:PBS (pH 7.2) (1:1): 0.5 mg/mL (1.63 mM),Sonication is recommended. Ethanol: 100 mg/mL (326.27 mM),Sonication is recommended. (< 1 mg/ml refers to the product slightly soluble or insoluble)
In vivo Formulation	10% DMSO+90% Corn Oil: 2 mg/mL (6.53 mM),Sonication is recommended. <i>Please add the solvents sequentially, clarifying the solution as much as possible before adding the next one. Dissolve by heating and/or sonication if necessary. Working solution is recommended to be prepared and used immediately. The formulation provided above is for reference purposes only. In vivo formulations may vary and should be modified based on specific experimental conditions.</i>

Preparing Stock Solutions

	1mg	5mg	10mg
1 mM	3.2627 mL	16.3137 mL	32.6275 mL
5 mM	0.6525 mL	3.2627 mL	6.5255 mL
10 mM	0.3263 mL	1.6314 mL	3.2627 mL
50 mM	0.0653 mL	0.3263 mL	0.6525 mL

Please select the appropriate solvent to prepare the stock solution, according to the solubility of the product in different solvents. Please use it as soon as possible.

Note: The dilution table applies only to solid products. For liquid products, please calculate the stock solution based on the stated concentration and/or density.

Inhibitor · Natural Compounds · Compound Libraries · Recombinant Proteins

This product is for Research Use Only · Not for Human or Veterinary or Therapeutic Use

Tel:781-999-4286 E_mail:info@targetmol.com Address:34 Washington Street,Wellesley Hills,MA 02481