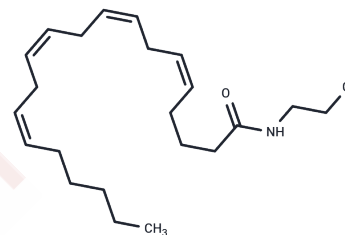


ACEA

Chemical Properties

CAS No. :	220556-69-4
Formula:	C22H36ClNO
Molecular Weight:	365.98
Storage:	Powder: -20°C for 3 years In solvent: -80°C for 1 year Actual storage temperature shall be subject to the COA.



Biological Description

Description	Arachidonoyl 2-chloroethylamide (ACEA) is a potent and selective cannabinoid (CB) receptor 1 agonist with K_i values of 1.4 and $>2,000$ nM for CB1 and CB2 receptors, respectively. In whole animal experiments, ACEA induces hypothermia in mice with the same efficacy as arachidonoyl ethanolamide, in spite of its higher affinity for the CB1 receptor. These data have been interpreted to indicate that ACEA may be a substrate for fatty acid amide hydrolase (FAAH), and thus only transiently available in whole animal experiments.
Targets(IC50)	Others

Solubility Information

Solubility	DMSO: 20 mg/mL (54.65 mM), Sonication is recommended. Ethanol: 25 mg/mL (68.31 mM), Sonication is recommended. DMF: 30 mg/mL (81.97 mM), Sonication is recommended. (< 1 mg/ml refers to the product slightly soluble or insoluble)
------------	---

Preparing Stock Solutions

	1mg	5mg	10mg
1 mM	2.7324 mL	13.6619 mL	27.3239 mL
5 mM	0.5465 mL	2.7324 mL	5.4648 mL
10 mM	0.2732 mL	1.3662 mL	2.7324 mL
50 mM	0.0546 mL	0.2732 mL	0.5465 mL

Please select the appropriate solvent to prepare the stock solution, according to the solubility of the product in different solvents. Please use it as soon as possible.

Note: The dilution table applies only to solid products. For liquid products, please calculate the stock solution based on the stated concentration and/or density.

Reference

Pertwee, R.G. Pharmacology of cannabinoid receptor ligands *Curr. Med. Chem.* 6(8), 635-664 (1999).

Hillard, C.J., Manna, S., Greenberg, M.J., et al. Synthesis and characterization of potent and selective agonists of the neuronal cannabinoid receptor (CB1) *J. Pharmacol. Exp. Ther.* 289(3), 1427-1433 (1999).

Inhibitor · Natural Compounds · Compound Libraries · Recombinant Proteins

This product is for Research Use Only · Not for Human or Veterinary or Therapeutic Use

Tel:781-999-4286 E_mail:info@targetmol.com Address:34 Washington Street,Wellesley Hills,MA 02481