

LG 50214

Chemical Properties

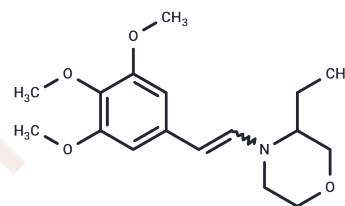
CAS No. : 24358-35-8

Formula: C₁₇H₂₅NO₄

Molecular Weight: 307.38

Storage: Powder: -20°C for 3 years | In solvent: -80°C for 1 year

Actual storage temperature shall be subject to the COA.



Biological Description

Description	LG 50214 is a bioactive chemical.
Targets(IC50)	Others

Preparing Stock Solutions

	1mg	5mg	10mg
1 mM	3.2533 mL	16.2665 mL	32.533 mL
5 mM	0.6507 mL	3.2533 mL	6.5066 mL
10 mM	0.3253 mL	1.6267 mL	3.2533 mL
50 mM	0.0651 mL	0.3253 mL	0.6507 mL

Please select the appropriate solvent to prepare the stock solution, according to the solubility of the product in different solvents. Please use it as soon as possible.

Note: The dilution table applies only to solid products. For liquid products, please calculate the stock solution based on the stated concentration and/or density.

Reference

- Kim HJ, Kim DK, Sohn TS, Lee JH, Lee GH. A laparoscopic gastrectomy approach decreases the incidence and severity of emergence agitation after sevoflurane anesthesia. *J Anesth.* 2015 Apr;29(2):223-8. doi: 10.1007/s00540-014-1905-8. Epub 2014 Aug 14. PubMed PMID: 25120246.
- Feng X, Wang X, Yu X, Zhang X, Lu C, Sun X, Tong J. Microsatellite-centromere mapping in common carp through half-tetrad analysis in diploid meiogynogenetic families. *Chromosoma.* 2015 Mar;124(1):67-79. doi: 10.1007/s00412-014-0485-6. Epub 2014 Aug 30. PubMed PMID: 25171918.
- Noiseux I, Gauthier SF, Turgeon SL. Interactions between bovine beta-lactoglobulin and peptides under different physicochemical conditions. *J Agric Food Chem.* 2002 Mar 13;50(6):1587-92. PubMed PMID: 11879041.
- Lensmeyer GL, Gidal BE, Wiebe DA. Optimized high-performance liquid chromatographic method for determination of lamotrigine in serum with concomitant determination of phenytoin, carbamazepine, and carbamazepine epoxide. *Ther Drug Monit.* 1997 Jun;19(3):292-300. PubMed PMID: 9200770.

Inhibitor · Natural Compounds · Compound Libraries · Recombinant Proteins

This product is for Research Use Only · Not for Human or Veterinary or Therapeutic Use

Tel:781-999-4286 E_mail:info@targetmol.com Address:34 Washington Street,Wellesley Hills,MA 02481