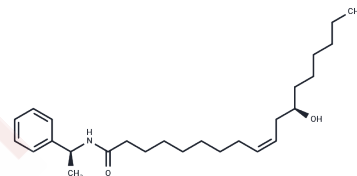


(S)- α -Methylbenzyl Ricinoleamide

Chemical Properties

CAS No. :	1246776-22-6
Formula:	C ₂₆ H ₄₃ NO ₂
Molecular Weight:	401.63
Storage:	Powder: -20°C for 3 years In solvent: -80°C for 1 year Actual storage temperature shall be subject to the COA.



Biological Description

Description	(S)- α -Methylbenzyl ricinoleamide is a fatty acid amide derived from ricinoleic acid and methyl benzylamine. It demonstrates potent growth inhibition of glioma (U251), breast (MCF-7), ovarian (NCI-ADR/RES and OVCAR-3), kidney (786-0), non-small cell lung (NCI-H460), and prostate (PC-3) cancer cells with a mean GI ₅₀ value of 6.9 μ M.
Targets(IC ₅₀)	Others

Solubility Information

Solubility	DMF: 30 mg/mL (74.7 mM),Sonication is recommended. Ethanol:PBS (pH 7.2) (1:3): 0.25 mg/mL (0.62 mM),Sonication is recommended. DMSO: 25 mg/mL (62.25 mM),Sonication is recommended. Ethanol: 30 mg/mL (74.7 mM),Sonication is recommended. (< 1 mg/ml refers to the product slightly soluble or insoluble)
------------	--

Preparing Stock Solutions

	1mg	5mg	10mg
1 mM	2.4899 mL	12.4493 mL	24.8985 mL
5 mM	0.498 mL	2.4899 mL	4.9797 mL
10 mM	0.249 mL	1.2449 mL	2.4899 mL
50 mM	0.0498 mL	0.249 mL	0.498 mL

Please select the appropriate solvent to prepare the stock solution, according to the solubility of the product in different solvents. Please use it as soon as possible.

Note: The dilution table applies only to solid products. For liquid products, please calculate the stock solution based on the stated concentration and/or density.

Inhibitor · Natural Compounds · Compound Libraries · Recombinant Proteins

This product is for Research Use Only · Not for Human or Veterinary or Therapeutic Use

Tel:781-999-4286 E_mail:info@targetmol.com Address:34 Washington Street,Wellesley Hills,MA 02481