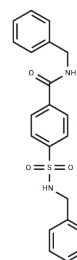


TH-263

Chemical Properties

CAS No. : 313520-94-4
 Formula: C₂₁H₂₀N₂O₃S
 Molecular Weight: 380.46
 Storage: Powder: -20°C for 3 years | In solvent: -80°C for 1 year
 Actual storage temperature shall be subject to the COA.



Biological Description

Description	TH-263 is inactive toward both LIMK1 and LIMK2 and thus can be used as negative control for TH-257, and is a diaryl sulfonamide derivative.
Targets(IC50)	Others,LIM Kinase

Solubility Information

Solubility	DMSO: 25 mg/mL (65.71 mM),Sonication is recommended. (< 1 mg/ml refers to the product slightly soluble or insoluble)
In vivo Formulation	10% DMSO+40% PEG300+5% Tween 80+45% Saline: 1 mg/mL (2.63 mM),Sonication is recommended. <i>Please add the solvents sequentially, clarifying the solution as much as possible before adding the next one. Dissolve by heating and/or sonication if necessary. Working solution is recommended to be prepared and used immediately. The formulation provided above is for reference purposes only. In vivo formulations may vary and should be modified based on specific experimental conditions.</i>

Preparing Stock Solutions

	1mg	5mg	10mg
1 mM	2.6284 mL	13.142 mL	26.284 mL
5 mM	0.5257 mL	2.6284 mL	5.2568 mL
10 mM	0.2628 mL	1.3142 mL	2.6284 mL
50 mM	0.0526 mL	0.2628 mL	0.5257 mL

Please select the appropriate solvent to prepare the stock solution, according to the solubility of the product in different solvents. Please use it as soon as possible.

Note: The dilution table applies only to solid products. For liquid products, please calculate the stock solution based on the stated concentration and/or density.

Reference

Manetti F. Recent advances in the rational design and development of LIM kinase inhibitors are not enough to enter clinical trials. Eur J Med Chem. 2018 Jul 15;155:445-458.

Inhibitor · Natural Compounds · Compound Libraries · Recombinant Proteins

This product is for Research Use Only · Not for Human or Veterinary or Therapeutic Use

Tel:781-999-4286 E_mail:info@targetmol.com Address:34 Washington Street,Wellesley Hills,MA 02481