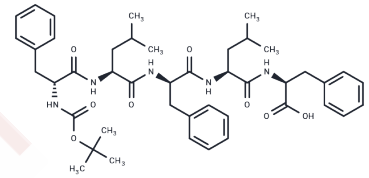


N-Boc-Phe-Leu-Phe-Leu-Phe

Chemical Properties

CAS No. :	148182-34-7
Formula:	C44H59N5O8
Molecular Weight:	785.97
Storage:	Keep away from moisture Powder: -20°C for 3 years In solvent: -80°C for 1 year <i>Actual storage temperature shall be subject to the COA.</i>



Biological Description

Description	N-Boc-Phe-Leu-Phe-Leu-Phe (Boc-FLFLF) is a formyl peptide receptor 1 (FPR1) antagonist that increases pain effects and inhibits the antinociceptive activity of annexin. Boc-FLFLF is extensively used in FPR research.
Targets(IC50)	Others

Solubility Information

Solubility	DMSO: 10 mM, Sonication is recommended. (< 1 mg/ml refers to the product slightly soluble or insoluble)
In vivo Formulation	10% DMSO+90% Corn Oil: 1 mg/mL (1.27 mM), Sonication is recommended. <i>Please add the solvents sequentially, clarifying the solution as much as possible before adding the next one. Dissolve by heating and/or sonication if necessary. Working solution is recommended to be prepared and used immediately. The formulation provided above is for reference purposes only. In vivo formulations may vary and should be modified based on specific experimental conditions.</i>

Preparing Stock Solutions

	1mg	5mg	10mg
1 mM	1.2723 mL	6.3616 mL	12.7231 mL
5 mM	0.2545 mL	1.2723 mL	2.5446 mL
10 mM	0.1272 mL	0.6362 mL	1.2723 mL
50 mM	0.0254 mL	0.1272 mL	0.2545 mL

Please select the appropriate solvent to prepare the stock solution, according to the solubility of the product in different solvents. Please use it as soon as possible.

Note: The dilution table applies only to solid products. For liquid products, please calculate the stock solution based on the stated concentration and/or density.

Reference

Schepetkin IA, et al. Antagonism of human formyl peptide receptor 1 (FPR1) by chromones and related isoflavones. *Biochem Pharmacol.* 2014 Dec 15;92(4):627-41.

Inhibitor · Natural Compounds · Compound Libraries · Recombinant Proteins

This product is for Research Use Only · Not for Human or Veterinary or Therapeutic Use

Tel:781-999-4286 E_mail:info@targetmol.com Address:34 Washington Street,Wellesley Hills,MA 02481