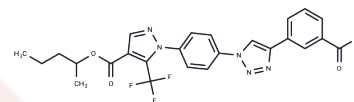


SOCE inhibitor 1

Chemical Properties

CAS No. : 2169316-15-6
 Formula: C₂₅H₂₂F₃N₅O₄
 Molecular Weight: 513.47
 Storage: Powder: -20°C for 3 years | In solvent: -80°C for 1 year
 Actual storage temperature shall be subject to the COA.



Biological Description

Description	SOCE inhibitor 1 is a inhibitor of store-operated calcium entry (SOCE)(IC ₅₀ of 4.4 μM).
Targets(IC ₅₀)	Others,Calcium Channel

Preparing Stock Solutions

	1mg	5mg	10mg
1 mM	1.9475 mL	9.7377 mL	19.4753 mL
5 mM	0.3895 mL	1.9475 mL	3.8951 mL
10 mM	0.1948 mL	0.9738 mL	1.9475 mL
50 mM	0.039 mL	0.1948 mL	0.3895 mL

Please select the appropriate solvent to prepare the stock solution, according to the solubility of the product in different solvents. Please use it as soon as possible.

Note: The dilution table applies only to solid products. For liquid products, please calculate the stock solution based on the stated concentration and/or density.

Reference

Riva B, et al. Pytriazoles, a Novel Class of Store-Operated Calcium Entry Modulators: Discovery, Biological Profiling, and in Vivo Proof-of-Concept Efficacy in Acute Pancreatitis. J Med Chem. 2018 Nov 8;61(21):9756-9783.

Inhibitor · Natural Compounds · Compound Libraries · Recombinant Proteins

This product is for Research Use Only· Not for Human or Veterinary or Therapeutic Use

Tel:781-999-4286 E_mail:info@targetmol.com Address:34 Washington Street,Wellesley Hills,MA 02481