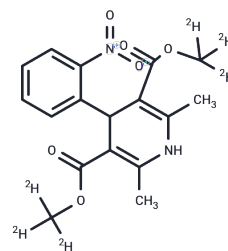


## Nifedipine-D6

## Chemical Properties

CAS No. :	1188266-14-9
Formula:	C <sub>17</sub> H <sub>18</sub> N <sub>2</sub> O <sub>6</sub>
Molecular Weight:	352.37
Storage:	Powder: -20°C for 3 years   In solvent: -80°C for 1 year Actual storage temperature shall be subject to the COA.



## Biological Description

Description	Nifedipine-D6 is deuterium labeled nifedipine (T1146) which is a potent blocker of calcium channel.
Targets(IC50)	Calcium Channel

## Preparing Stock Solutions

	1mg	5mg	10mg
1 mM	2.8379 mL	14.1896 mL	28.3793 mL
5 mM	0.5676 mL	2.8379 mL	5.6759 mL
10 mM	0.2838 mL	1.419 mL	2.8379 mL
50 mM	0.0568 mL	0.2838 mL	0.5676 mL

Please select the appropriate solvent to prepare the stock solution, according to the solubility of the product in different solvents. Please use it as soon as possible.

Note: The dilution table applies only to solid products. For liquid products, please calculate the stock solution based on the stated concentration and/or density.

## Reference

Patel DP, et al. Highly sensitive and rapid ultra-performance liquid chromatography-tandem mass spectrometry method for the determination of nifedipine in human plasma and its application to a bioequivalence study. Biomed Chromatogr. 2012 Dec;26(12):1509-18.

Inhibitor · Natural Compounds · Compound Libraries · Recombinant Proteins

This product is for Research Use Only · Not for Human or Veterinary or Therapeutic Use

Tel:781-999-4286 E\_mail:info@targetmol.com Address:34 Washington Street,Wellesley Hills,MA 02481