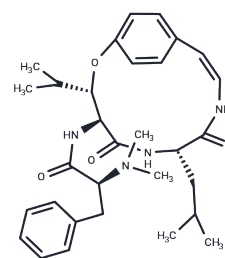


Frangufoline

Chemical Properties

CAS No. :	19526-09-1
Formula:	C ₃₁ H ₄₂ N ₄ O ₄
Molecular Weight:	534.701
Storage:	Powder: -20°C for 3 years In solvent: -80°C for 1 year Actual storage temperature shall be subject to the COA.



Biological Description

Description	Frangufoline is a sedative 14-membered frangulanine-type cyclopeptide alkaloid.
Targets(IC50)	Others

Preparing Stock Solutions

	1mg	5mg	10mg
1 mM	1.8702 mL	9.351 mL	18.7021 mL
5 mM	0.374 mL	1.8702 mL	3.7404 mL
10 mM	0.187 mL	0.9351 mL	1.8702 mL
50 mM	0.0374 mL	0.187 mL	0.374 mL

Please select the appropriate solvent to prepare the stock solution, according to the solubility of the product in different solvents. Please use it as soon as possible.

Note: The dilution table applies only to solid products. For liquid products, please calculate the stock solution based on the stated concentration and/or density.

Reference

- Oshima N, Zaima K, Kamakura H, Hamato A, Yamamoto Y, Kang DH, Yokokura T, Goda Y, Hakamatsuka T, Maruyama T. Identification of marker compounds for Japanese Pharmacopoeia non-conforming jujube seeds from Myanmar. *J Nat Med.* 2015 Jan;69(1):68-75. doi: 10.1007/s11418-014-0864-6. Epub 2014 Aug 13. PubMed PMID: 25115227.
- Suh DY, Kim YC, Kang YH, Han YN, Han BH. Metabolic cleavage of frangufoline in rodents: in vitro and in vivo study. *J Nat Prod.* 1997 Mar;60(3):265-9. PubMed PMID: 9090868.
- Guo S, Duan JA, Zhao JL, Qian DW, Zhang WJ. [Chemical constituents from seeds of *Ziziphus mauritiana*]. *Zhong Yao Cai.* 2014 Mar;37(3):432-5. Chinese. PubMed PMID: 25174108.
- Digel M, Morel A, Layer H, Biermann J, Voelter W. [Peptide alkaloids from *Discaria febrifuga* Mart]. *Hoppe Seylers Z Physiol Chem.* 1983 Nov;364(11):1641-3. German. PubMed PMID: 6662505.

Inhibitor · Natural Compounds · Compound Libraries · Recombinant Proteins

This product is for Research Use Only · Not for Human or Veterinary or Therapeutic Use

Tel:781-999-4286 E_mail:info@targetmol.com Address:34 Washington Street,Wellesley Hills,MA 02481