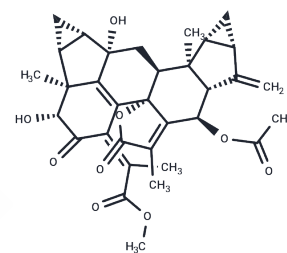


Chlorahololide C

Chemical Properties

CAS No. :	1007859-25-7
Formula:	C33H36O9
Molecular Weight:	576.63
Storage:	Powder: -20°C for 3 years In solvent: -80°C for 1 year Actual storage temperature shall be subject to the COA.



Biological Description

Description	Chlorahololide C is a potent and selective potassium channel blocker, it exerts potent and selective inhibition on the delayed rectifier (I(K)) K(+) current with the IC(50) value of 3.6 +/- 10.1 mu M.
Targets(IC50)	Potassium Channel

Preparing Stock Solutions

	1mg	5mg	10mg
1 mM	1.7342 mL	8.6711 mL	17.3421 mL
5 mM	0.3468 mL	1.7342 mL	3.4684 mL
10 mM	0.1734 mL	0.8671 mL	1.7342 mL
50 mM	0.0347 mL	0.1734 mL	0.3468 mL

Please select the appropriate solvent to prepare the stock solution, according to the solubility of the product in different solvents. Please use it as soon as possible.

Note: The dilution table applies only to solid products. For liquid products, please calculate the stock solution based on the stated concentration and/or density.

Inhibitor · Natural Compounds · Compound Libraries · Recombinant Proteins

This product is for Research Use Only · Not for Human or Veterinary or Therapeutic Use

Tel:781-999-4286 E_mail:info@targetmol.com Address:34 Washington Street,Wellesley Hills,MA 02481