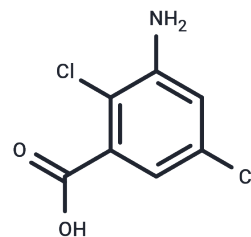


Chloramben

Chemical Properties

CAS No. :	133-90-4
Formula:	C7H5Cl2NO2
Molecular Weight:	206.03
Storage:	Powder: -20°C for 3 years In solvent: -80°C for 1 year Actual storage temperature shall be subject to the COA.



Biological Description

Description	Chloramben, a herbicide, is used to control the seedlings of annual grasses and broadleaf weeds.
Targets(IC50)	Others

Solubility Information

Solubility	DMSO: 250 mg/mL (1213.42 mM), Sonication is recommended. (< 1 mg/ml refers to the product slightly soluble or insoluble)
In vivo Formulation	10% DMSO+40% PEG300+5% Tween-80+45% Saline: 3.3 mg/mL (16.02 mM), Sonication is recommended. <i>Please add the solvents sequentially, clarifying the solution as much as possible before adding the next one. Dissolve by heating and/or sonication if necessary. Working solution is recommended to be prepared and used immediately. The formulation provided above is for reference purposes only. In vivo formulations may vary and should be modified based on specific experimental conditions.</i>

Preparing Stock Solutions

	1mg	5mg	10mg
1 mM	4.8537 mL	24.2683 mL	48.5366 mL
5 mM	0.9707 mL	4.8537 mL	9.7073 mL
10 mM	0.4854 mL	2.4268 mL	4.8537 mL
50 mM	0.0971 mL	0.4854 mL	0.9707 mL

Please select the appropriate solvent to prepare the stock solution, according to the solubility of the product in different solvents. Please use it as soon as possible.

Note: The dilution table applies only to solid products. For liquid products, please calculate the stock solution based on the stated concentration and/or density.

Reference

Thiam A, et al. On the performance of electrocatalytic anodes for photoelectro-Fenton treatment of synthetic solutions and real water spiked with the herbicide chloramben. J Environ Manage. 2018 Oct 15;224:340-349.

Inhibitor · Natural Compounds · Compound Libraries · Recombinant Proteins

This product is for Research Use Only· Not for Human or Veterinary or Therapeutic Use

Tel:781-999-4286 E_mail:info@targetmol.com Address:34 Washington Street,Wellesley Hills,MA 02481