

CEP-28122

Chemical Properties

CAS No. : 1022958-60-6

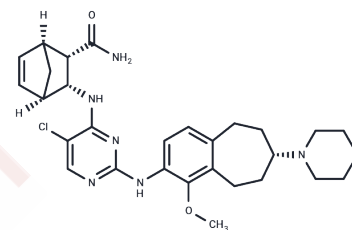
Formula: C₂₈H₃₅ClN₆O₃

Molecular Weight: 539.07

Store at low temperature

Storage: Powder: -20°C for 3 years | In solvent: -80°C for 1 year

Actual storage temperature shall be subject to the COA.



Biological Description

Description	CEP-28122 is a highly potent and selective, orally active ALK inhibitor.
Targets(IC ₅₀)	ALK
Kinase Assay	Flashplate assay for identification and evaluation of Aurora inhibitors: On this assay 384-well Basic Flashplate [®] as solid assay platform is used. The plates are coated overnight at 4 °C with dithiothreitol (DTT) at 100 µg/mL in PBS buffer and used after being washed twice with PBS. 5 µL of CCT137690 in 2% DMSO is added to each well followed by 15 µL master mix of kinase buffer (50 mM Tris pH 7.5, 10 mM NaCl, 2.5 mM MgCl ₂ , 1 mM myelin basic protein (MBP), 20 µM ATP, and 0.025 µCi/µL 33P-ATP). Finally, 250 ng per well of Aurora-A enzyme is added. The plate is shaken for approximately 2 min on a flat-bed plate shaker and incubated for 2 hours at room temperature. The reaction is stopped by washing the plate twice on a 16-pin wash with 10 mM sodium pyrophosphate. The plate is then read on a TopCount-NXTM. For the determination of the inhibitory activity against Aurora-B or Aurora-C, the same conditions are followed in the assay using Aurora-B or Aurora-C enzymes.

Solubility Information

Solubility	DMSO: 10 mM, Sonication is recommended. (< 1 mg/ml refers to the product slightly soluble or insoluble)
------------	------------------------------------------------------------------------------------------------------------

Preparing Stock Solutions

	1mg	5mg	10mg
1 mM	1.855 mL	9.2752 mL	18.5505 mL
5 mM	0.371 mL	1.855 mL	3.7101 mL
10 mM	0.1855 mL	0.9275 mL	1.855 mL
50 mM	0.0371 mL	0.1855 mL	0.371 mL

Please select the appropriate solvent to prepare the stock solution, according to the solubility of the product in different solvents. Please use it as soon as possible.

Note: The dilution table applies only to solid products. For liquid products, please calculate the stock solution based on the stated concentration and/or density.

Reference

Abate F, et al. Leukemia. 2015 Jun;29(6):1390-401.

Inhibitor · Natural Compounds · Compound Libraries · Recombinant Proteins

This product is for Research Use Only · Not for Human or Veterinary or Therapeutic Use

Tel:781-999-4286 E_mail:info@targetmol.com Address:34 Washington Street,Wellesley Hills,MA 02481