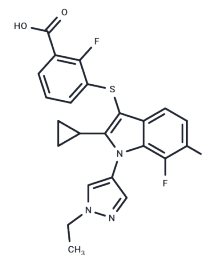


PAT-505

Chemical Properties

CAS No. :	1782070-22-7
Formula:	C ₂₃ H ₁₈ ClF ₂ N ₃ O ₂ S
Molecular Weight:	473.92
Storage:	Store at low temperature Powder: -20°C for 3 years In solvent: -80°C for 1 year <i>Actual storage temperature shall be subject to the COA.</i>



Biological Description

Description	PAT-505 is an orally available, selective and potent inhibitor of autologous epidermal growth factor (IC ₅₀ 2 nM in Hep3B cells, 9.7 nM in human blood, 62 nM in mouse plasma).
Targets(IC ₅₀)	EGFR,PDE
In vivo	PAT-505 is an effective, selective, and non-competitive inhibitor, exhibiting significant inhibition of ATX activity in plasma and liver tissues upon oral administration. Therapeutic dosing of PAT-505 in Stelic mice model of non-alcoholic steatohepatitis (NASH) resulted in a modest but significant improvement in fibrosis, with only slight improvements in hepatocyte ballooning and liver inflammation. In choline-deficient, high-fat NASH diet model, PAT-505 treatment effectively reduced liver fibrosis, without significant effects on steatosis, hepatocyte ballooning, or inflammation[1].

Solubility Information

Solubility	DMSO: 30 mg/mL (63.3 mM),Sonication is recommended. (< 1 mg/ml refers to the product slightly soluble or insoluble)
In vivo Formulation	10% DMSO+40% PEG300+5% Tween 80+45% Saline: 4 mg/mL (8.44 mM),Sonication is recommended. <i>Please add the solvents sequentially, clarifying the solution as much as possible before adding the next one. Dissolve by heating and/or sonication if necessary. Working solution is recommended to be prepared and used immediately. The formulation provided above is for reference purposes only. In vivo formulations may vary and should be modified based on specific experimental conditions.</i>

Preparing Stock Solutions

	1mg	5mg	10mg
1 mM	2.1101 mL	10.5503 mL	21.1006 mL
5 mM	0.422 mL	2.1101 mL	4.2201 mL
10 mM	0.211 mL	1.055 mL	2.1101 mL
50 mM	0.0422 mL	0.211 mL	0.422 mL

Please select the appropriate solvent to prepare the stock solution, according to the solubility of the product in different solvents. Please use it as soon as possible.

Note: The dilution table applies only to solid products. For liquid products, please calculate the stock solution based on the stated concentration and/or density.

Reference

Bain G, et al. Selective Inhibition of Autotaxin Is Efficacious in Mouse Models of Liver Fibrosis. *J Pharmacol Exp Ther.* 2017 Jan;360(1):1-13. Epub 2016 Oct 17.

Inhibitor · Natural Compounds · Compound Libraries · Recombinant Proteins

This product is for Research Use Only · Not for Human or Veterinary or Therapeutic Use

Tel:781-999-4286 E_mail:info@targetmol.com Address:34 Washington Street,Wellesley Hills,MA 02481