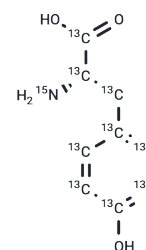


L-Tyrosine-13C9,15N

Chemical Properties

CAS No. :	202407-26-9
Formula:	C ₉ H ₁₁ NO ₃
Molecular Weight:	191.115
Storage:	Powder: -20°C for 3 years In solvent: -80°C for 1 year Actual storage temperature shall be subject to the COA.



Biological Description

Description	L-Tyrosine-13C ₉ ,15N is intended for use as an internal standard for the quantification of L-tyrosine by GC- or LC-MS. L-Tyrosine (T0493) is a non-essential amino acid. It is produced by hydroxylation of phenylalanine by phenylalanine hydroxylase but can also be obtained from dietary sources or degradation of endogenous proteins, resulting in L-tyrosine release. L-Tyrosine is a precursor in the biosynthesis of catecholamine neurotransmitters, melanins, and thyroid hormones. Plasma, skeletal muscle, and erythrocyte levels of L-tyrosine are decreased in patients with chronic kidney disease.
-------------	---

Solubility Information

Solubility	PBS (pH 7.2): Slightly soluble DMSO: Slightly soluble Methanol: Slightly soluble (< 1 mg/ml refers to the product slightly soluble or insoluble)
------------	--

Preparing Stock Solutions

	1mg	5mg	10mg
1 mM	5.2323 mL	26.1616 mL	52.3231 mL
5 mM	1.0465 mL	5.2323 mL	10.4646 mL
10 mM	0.5232 mL	2.6162 mL	5.2323 mL
50 mM	0.1046 mL	0.5232 mL	1.0465 mL

Please select the appropriate solvent to prepare the stock solution, according to the solubility of the product in different solvents. Please use it as soon as possible.

Note: The dilution table applies only to solid products. For liquid products, please calculate the stock solution based on the stated concentration and/or density.

Reference

Kopple, J.D. Phenylalanine and tyrosine metabolism in chronic kidney failure. *J. Nutr.* 137(6 Suppl 1):1586S-1590S (2007)

Webster, D., and Wildgoose, J. Tyrosine supplementation for phenylketonuria. *Cochrane DB Syst. Rev.* 2013(6) CD001507(2013)

Slominski, A., and Paus, R. Towards defining receptors for L-tyrosine and L-DOPA. *Mol. Cell Endocrinol.* 99(2):C7-C11 (1994)

Inhibitor · Natural Compounds · Compound Libraries · Recombinant Proteins

This product is for Research Use Only · Not for Human or Veterinary or Therapeutic Use

Tel: 781-999-4286 E_mail: info@targetmol.com Address: 34 Washington Street, Wellesley Hills, MA 02481