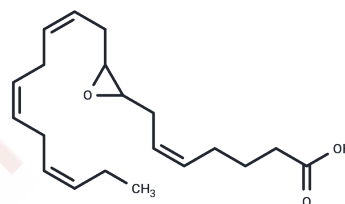


**(±)8(9)-EpETE****Chemical Properties**

CAS No. :	851378-93-3
Formula:	C <sub>20</sub> H <sub>30</sub> O <sub>3</sub>
Molecular Weight:	318.45
Storage:	Store at low temperature Powder: -20°C for 3 years   In solvent: -80°C for 1 year <small>Actual storage temperature shall be subject to the COA.</small>

**Biological Description**

Description	(±)8(9)-EpETE ((±)8,9-EEQ) is an epoxide of arachidonic acid biosynthesized by cytochrome P-450 (CYP450) epoxy synthase, which is specific for glomerular protection, dose-dependently prevents fspf-induced Palb, activation of Ca <sup>2+</sup> -activated K <sup>+</sup> (BKCa) channels, and is used in the study of cardiovascular disease.
Targets(IC50)	Angiotensin-converting Enzyme (ACE),Potassium Channel

**Solubility Information**

Solubility	Ethanol: 10 mg/mL (31.4 mM),Sonication is recommended. DMSO: 10 mg/mL (31.4 mM),Sonication is recommended. PBS (pH 7.2):: < 1 mg/mL (insoluble) DMF: 10 mg/mL (31.4 mM),Sonication is recommended. PBS (pH 7.2): 1 mg/mL (3.14 mM),Sonication is recommended. (< 1 mg/ml refers to the product slightly soluble or insoluble)
------------	--

**Preparing Stock Solutions**

	1mg	5mg	10mg
1 mM	3.1402 mL	15.7011 mL	31.4021 mL
5 mM	0.628 mL	3.1402 mL	6.2804 mL
10 mM	0.314 mL	1.5701 mL	3.1402 mL
50 mM	0.0628 mL	0.314 mL	0.628 mL

Please select the appropriate solvent to prepare the stock solution, according to the solubility of the product in different solvents. Please use it as soon as possible.

Note: The dilution table applies only to solid products. For liquid products, please calculate the stock solution based on the stated concentration and/or density.

### Reference

Barbosa-Sicard E, et al. Eicosapentaenoic acid metabolism by cytochrome P450 enzymes of the CYP2C subfamily. *Biochem Biophys Res Commun.* 2005 Apr 22;329(4):1275-81.

Lauterbach B, et al. Cytochrome P450-dependent eicosapentaenoic acid metabolites are novel BK channel activators. *Hypertension.* 2002 Feb;39(2 Pt 2):609-13.

**Inhibitor · Natural Compounds · Compound Libraries · Recombinant Proteins**

This product is for Research Use Only · Not for Human or Veterinary or Therapeutic Use

Tel:781-999-4286 E\_mail:info@targetmol.com Address:34 Washington Street,Wellesley Hills,MA 02481