

Glu-urea-Lys

Chemical Properties

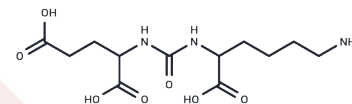
CAS No. : 1025796-69-3

Formula: C₁₂H₂₁N₃O₇

Molecular Weight: 319.31

Storage: Store at low temperature, Keep away from moisture
Powder: -20°C for 3 years | In solvent: -80°C for 1 year

Actual storage temperature shall be subject to the COA.



Biological Description

Description	Glu-urea-Lys is a molecular scaffold that targets PSMA and can be used as a prostate cancer imaging agent to study prostate-specific membrane antigens.
Targets(IC50)	PSMA

Solubility Information

Solubility	DMSO: 50 mg/mL (156.59 mM), Sonication is recommended. (< 1 mg/ml refers to the product slightly soluble or insoluble)
------------	---

Preparing Stock Solutions

	1mg	5mg	10mg
1 mM	3.1318 mL	15.6588 mL	31.3175 mL
5 mM	0.6264 mL	3.1318 mL	6.2635 mL
10 mM	0.3132 mL	1.5659 mL	3.1318 mL
50 mM	0.0626 mL	0.3132 mL	0.6264 mL

Please select the appropriate solvent to prepare the stock solution, according to the solubility of the product in different solvents. Please use it as soon as possible.

Note: The dilution table applies only to solid products. For liquid products, please calculate the stock solution based on the stated concentration and/or density.

Reference

Zhou W, et al. Glu-Urea-Lys Scaffold Functionalized Superparamagnetic Iron Oxide Nanoparticles Targeting PSMA for In Vivo Molecular MRI of Prostate Cancer. *Pharmaceutics*. 2022 Sep 26;14(10):2051.

Inhibitor · Natural Compounds · Compound Libraries · Recombinant Proteins

This product is for Research Use Only · Not for Human or Veterinary or Therapeutic Use

Tel:781-999-4286 E_mail:info@targetmol.com Address:34 Washington Street,Wellesley Hills,MA 02481