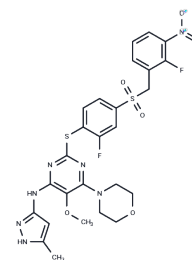


Centrinone

Chemical Properties

CAS No. :	1798871-30-3
Formula:	C ₂₆ H ₂₅ F ₂ N ₇ O ₆ S ₂
Molecular Weight:	633.65
Storage:	Powder: -20°C for 3 years In solvent: -80°C for 1 year Actual storage temperature shall be subject to the COA.



Biological Description

Description	Centrinone (LCR-263) (LCR-263) is a reversible inhibitor of polo-like kinase 4 (PLK4; Ki: 0.16 nM).
Targets(IC50)	Aurora Kinase, PLK
In vitro	Centrinone (LCR-263) treatment causes centrosome depletion in human and other vertebrate cells and its treatment reduces centriole number in multiciliated <i>Xenopus</i> epithelial cells, which indicates that Plk4 also controls centriole amplification in differentiated cells. Centrinone (LCR-263) treatment of HeLa human cervical carcinoma cells leads to a progressive reduction in foci containing centriolar and pericentriolar material markers at each round of cell division, until most cells lack centrioles and centrosomes. Centrosome loss irreversibly arrests normal cells in a senescence-like G1 state by a p53-dependent mechanism that is independent of DNA damage, stress, Hippo signaling, extends mitotic duration, or segregation errors[1].

Solubility Information

Solubility	DMSO: 31 mg/mL (48.92 mM), Sonication is recommended. (< 1 mg/ml refers to the product slightly soluble or insoluble)
In vivo Formulation	10% DMSO+40% PEG300+5% Tween 80+45% Saline: 5 mg/mL (7.89 mM), Sonication is recommended. <i>Please add the solvents sequentially, clarifying the solution as much as possible before adding the next one. Dissolve by heating and/or sonication if necessary. Working solution is recommended to be prepared and used immediately. The formulation provided above is for reference purposes only. In vivo formulations may vary and should be modified based on specific experimental conditions.</i>

Preparing Stock Solutions

	1mg	5mg	10mg
1 mM	1.5782 mL	7.8908 mL	15.7816 mL
5 mM	0.3156 mL	1.5782 mL	3.1563 mL
10 mM	0.1578 mL	0.7891 mL	1.5782 mL
50 mM	0.0316 mL	0.1578 mL	0.3156 mL

Please select the appropriate solvent to prepare the stock solution, according to the solubility of the product in different solvents. Please use it as soon as possible.

Note: The dilution table applies only to solid products. For liquid products, please calculate the stock solution based on the stated concentration and/or density.

Reference

Wong YL. et al. Cell biology. Reversible centriole depletion with an inhibitor of Polo-like kinase 4. Science. 2015 Jun 5;348(6239):1155-60.

Inhibitor · Natural Compounds · Compound Libraries · Recombinant Proteins

This product is for Research Use Only · Not for Human or Veterinary or Therapeutic Use

Tel:781-999-4286 E_mail:info@targetmol.com Address:34 Washington Street,Wellesley Hills,MA 02481