

## Unedone

## Chemical Properties

CAS No. : 1199815-09-2

Formula: C<sub>13</sub>H<sub>20</sub>O<sub>4</sub>

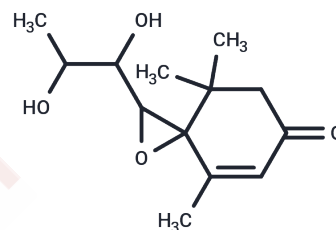
Molecular Weight: 240.3

Storage:

Keep away from direct sunlight, Keep away from moisture, Store at low temperature

Powder: -20°C for 3 years | In solvent: -80°C for 1 year

Actual storage temperature shall be subject to the COA.



## Biological Description

Description	Unedone is a naturally occurring sesquiterpene compound with a bitter taste, present in honey from <i>Arbutus unedo</i> L.
Targets(IC50)	Others

## Preparing Stock Solutions

	1mg	5mg	10mg
1 mM	4.1615 mL	20.8073 mL	41.6146 mL
5 mM	0.8323 mL	4.1615 mL	8.3229 mL
10 mM	0.4161 mL	2.0807 mL	4.1615 mL
50 mM	0.0832 mL	0.4161 mL	0.8323 mL

Please select the appropriate solvent to prepare the stock solution, according to the solubility of the product in different solvents. Please use it as soon as possible.

Note: The dilution table applies only to solid products. For liquid products, please calculate the stock solution based on the stated concentration and/or density.

Inhibitor · Natural Compounds · Compound Libraries · Recombinant Proteins

This product is for Research Use Only · Not for Human or Veterinary or Therapeutic Use

Tel: 781-999-4286

E\_mail: info@targetmol.com

Address: 34 Washington Street, Wellesley Hills, MA 02481