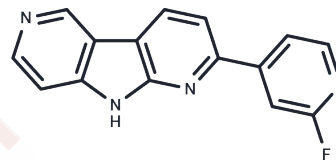


Tau tracer 2

Chemical Properties

CAS No. : 2173361-80-1
 Formula: C₁₅H₉FN₄
 Molecular Weight: 264.263
 Storage: Powder: -20°C for 3 years | In solvent: -80°C for 1 year
Actual storage temperature shall be subject to the COA.



Biological Description

Description	Tau tracer 2 (PL-2620) is a specific imaging agent designed to detect and visualize Tau protein aggregates, primarily used for diagnosing neurodegenerative diseases [1].
Targets(IC50)	Others, Microtubule Associated
In vitro	Tau tracer 2 (compound F-3a) enables selective detection of Tau aggregates associated with disorders such as Alzheimer's disease and other tauopathies through Positron Emission Tomography (PET) Imaging[1].

Solubility Information

Solubility	DMSO: 11.11 mg/mL (42.04 mM), Sonication is recommended. (< 1 mg/ml refers to the product slightly soluble or insoluble)
In vivo Formulation	10% DMSO+40% PEG300+5% Tween-80+45% Saline: 1 mg/mL (3.78 mM), Sonication is recommended. <i>Please add the solvents sequentially, clarifying the solution as much as possible before adding the next one. Dissolve by heating and/or sonication if necessary. Working solution is recommended to be prepared and used immediately. The formulation provided above is for reference purposes only. In vivo formulations may vary and should be modified based on specific experimental conditions.</i>

Preparing Stock Solutions

	1mg	5mg	10mg
1 mM	3.7842 mL	18.9208 mL	37.8415 mL
5 mM	0.7568 mL	3.7842 mL	7.5683 mL
10 mM	0.3784 mL	1.8921 mL	3.7842 mL
50 mM	0.0757 mL	0.3784 mL	0.7568 mL

Please select the appropriate solvent to prepare the stock solution, according to the solubility of the product in different solvents. Please use it as soon as possible.

Note: The dilution table applies only to solid products. For liquid products, please calculate the stock solution based on the stated concentration and/or density.

Reference

Heiko Kroth, et al. Compounds for imaging tau protein aggregates. WO2018015549A1.

Inhibitor · Natural Compounds · Compound Libraries · Recombinant Proteins

This product is for Research Use Only · Not for Human or Veterinary or Therapeutic Use

Tel:781-999-4286 E_mail:info@targetmol.com Address:34 Washington Street,Wellesley Hills,MA 02481