

TAPI-1 trifluoroacetate (163847-77-6(free base))

Chemical Properties

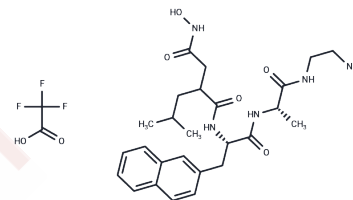
CAS No. :

Formula: C₂₈H₃₈F₃N₅O₇

Molecular Weight: 613.62

Storage: Powder: -20°C for 3 years | In solvent: -80°C for 1 year

Actual storage temperature shall be subject to the COA.



Biological Description

Description	TAPI-1 is an ADAM17/TACE inhibitor, which blocks shedding of cytokine receptors.
Targets(IC50)	MMP
In vitro	TAPI-1 prevents unstimulated and PMA-induced release of the soluble forms of TNF-alpha, p60 TNFR, and IL-6R from the monocytic cell line, THP-1, and from human peripheral blood monocytes. TAPI also inhibits LPS-induced shedding of the p60 TNFR and TNF-alpha from monocytes. TAPI-1 inhibits TACE-dependent constitutive release of co-transfected APP(695). TAPI-1 attenuates Ang II-induced EGFR transactivation and cell proliferation in human HSC line LI90. TAPI-1 with the EGFR inhibitor AG1478 exhibits deactivated AREG/EGFR/ERK signaling pathway and reduces pro-inflammatory cytokines release in pSS salivary gland-derived epithelial cells.

Solubility Information

Solubility	DMSO: 10 mM, Sonication is recommended. (< 1 mg/ml refers to the product slightly soluble or insoluble)
------------	--

Preparing Stock Solutions

	1mg	5mg	10mg
1 mM	1.6297 mL	8.1484 mL	16.2967 mL
5 mM	0.3259 mL	1.6297 mL	3.2593 mL
10 mM	0.163 mL	0.8148 mL	1.6297 mL
50 mM	0.0326 mL	0.163 mL	0.3259 mL

Please select the appropriate solvent to prepare the stock solution, according to the solubility of the product in different solvents. Please use it as soon as possible.

Note: The dilution table applies only to solid products. For liquid products, please calculate the stock solution based on the stated concentration and/or density.

Reference

Müllberg J, et al. J Immunol. 1995, 155(11), 5198-5205

Slack BE, et al. Biochem J. 2001, 357(Pt 3), 787-794.

Oikawa H, et al. Life Sci. 2014, 97(2), 137-144.

Inhibitor · Natural Compounds · Compound Libraries · Recombinant Proteins

This product is for Research Use Only · Not for Human or Veterinary or Therapeutic Use

Tel:781-999-4286 E_mail:info@targetmol.com Address:34 Washington Street,Wellesley Hills,MA 02481