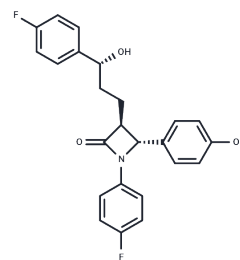


ent-Ezetimibe

Chemical Properties

CAS No. :	1376614-99-1
Formula:	C ₂₄ H ₂₁ F ₂ N ₃ O ₃
Molecular Weight:	409.43
Storage:	Powder: -20°C for 3 years In solvent: -80°C for 1 year Actual storage temperature shall be subject to the COA.



Biological Description

Description	Ezetimibe is a Niemann-Pick C1-like1 (NPC1L1) inhibitor, and is a potent Nrf2 activator. ent-Ezetimibe (ent-SCH 58235) (ent-SCH 58235) is the RRS-enantiomer of Ezetimibe. Ezetimibe is a potent cholesterol absorption inhibitor.
Targets(IC50)	Others, Drug Metabolite

Solubility Information

Solubility	DMSO: 60 mg/mL (146.55 mM), Sonication is recommended. (< 1 mg/ml refers to the product slightly soluble or insoluble)
------------	---

Preparing Stock Solutions

	1mg	5mg	10mg
1 mM	2.4424 mL	12.2121 mL	24.4242 mL
5 mM	0.4885 mL	2.4424 mL	4.8848 mL
10 mM	0.2442 mL	1.2212 mL	2.4424 mL
50 mM	0.0488 mL	0.2442 mL	0.4885 mL

Please select the appropriate solvent to prepare the stock solution, according to the solubility of the product in different solvents. Please use it as soon as possible.

Note: The dilution table applies only to solid products. For liquid products, please calculate the stock solution based on the stated concentration and/or density.

Reference

Lee DH, et al. Ezetimibe, an NPC1L1 inhibitor, is a potent Nrf2 activator that protects mice from diet-induced nonalcoholic steatohepatitis. *Free Radic Biol Med.* 2016 Sep 12;99:520-532.

Yijun Zhu, et al. Efficient and scalable process for the synthesis of antihypercholesterolemic drug ezetimibe. *An International Journal for Rapid Communication of Synthetic Organic Chemistry*

Inhibitor · Natural Compounds · Compound Libraries · Recombinant Proteins

This product is for Research Use Only · Not for Human or Veterinary or Therapeutic Use

Tel:781-999-4286 E_mail:info@targetmol.com Address:34 Washington Street,Wellesley Hills,MA 02481