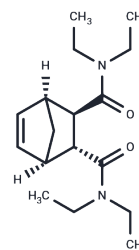


Endomide

Chemical Properties

CAS No. :	4582-18-7
Formula:	C ₁₇ H ₂₈ N ₂ O ₂
Molecular Weight:	292.42
Storage:	Powder: -20°C for 3 years In solvent: -80°C for 1 year Actual storage temperature shall be subject to the COA.



Biological Description

Description	Endomide is a bioactive chemical.
Targets(IC50)	Others

Preparing Stock Solutions

	1mg	5mg	10mg
1 mM	3.4197 mL	17.0987 mL	34.1974 mL
5 mM	0.6839 mL	3.4197 mL	6.8395 mL
10 mM	0.342 mL	1.7099 mL	3.4197 mL
50 mM	0.0684 mL	0.342 mL	0.6839 mL

Please select the appropriate solvent to prepare the stock solution, according to the solubility of the product in different solvents. Please use it as soon as possible.

Note: The dilution table applies only to solid products. For liquid products, please calculate the stock solution based on the stated concentration and/or density.

Reference

- Bodmann R, Koch H. [Metabolism of the central analeptic Endomide in the rat]. Pharmazie. 1976 Nov;31(11):804-11. German. PubMed PMID: 15286.
- Koch H. [Phytopharmacological investigation of endomide and its metabolites. Correlation between phytotoxicity, zootoxicity and lipophilic properties (author's transl)]. Arch Pharm (Weinheim). 1976 Oct 10;309(10):822-8. German. PubMed PMID: 1008679.
- Koch H, Bodmann R. [Acute toxicity of endomide and its metabolites. Correlation between biological activity and lipophilic properties (author's transl)]. Arch Pharm (Weinheim). 1976 Oct 10;309(10):812-22. German. PubMed PMID: 1008678.

Inhibitor · Natural Compounds · Compound Libraries · Recombinant Proteins

This product is for Research Use Only · Not for Human or Veterinary or Therapeutic Use

Tel:781-999-4286 E_mail:info@targetmol.com Address:34 Washington Street,Wellesley Hills,MA 02481