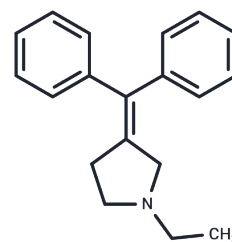


Pridefine

Chemical Properties

CAS No. :	5370-41-2
Formula:	C ₁₉ H ₂₁ N
Molecular Weight:	263.38
Storage:	Powder: -20°C for 3 years In solvent: -80°C for 1 year Actual storage temperature shall be subject to the COA.



Biological Description

Description	Pridefine (Pridefina) is a pyrrolidine derivative, a reuptake blocker of catecholamines and serotonin, with antidepressant activity.
Targets(IC50)	Others, 5-HT Receptor
In vivo	In rats receiving plaquenil (25 mg/kg, i.v.), NE levels were elevated for about 30 min and then declined rapidly.[3]

Preparing Stock Solutions

	1mg	5mg	10mg
1 mM	3.7968 mL	18.984 mL	37.968 mL
5 mM	0.7594 mL	3.7968 mL	7.5936 mL
10 mM	0.3797 mL	1.8984 mL	3.7968 mL
50 mM	0.0759 mL	0.3797 mL	0.7594 mL

Please select the appropriate solvent to prepare the stock solution, according to the solubility of the product in different solvents. Please use it as soon as possible.

Note: The dilution table applies only to solid products. For liquid products, please calculate the stock solution based on the stated concentration and/or density.

Reference

- Simpson GM, et al.. Relationship between plasma antidepressant levels and clinical outcome for inpatients receiving imipramine. *Am J Psychiatry*. 1982 Mar;139(3):358-60.
- DeMet EM, et al. Noncompetitive amine uptake inhibition by the new antidepressant pridefine. *J Neurochem*. 1981 Mar;36(3):917-23.
- Vosmer G, et al. Action of the antidepressant pridefine (AHR-1118) on biogenic amines in the rat brain. *Biochem Pharmacol*. 1980 Oct 1;29(19):2557-62.
- Halaris AE, et al. Open trial evaluation of a pyrrolidine derivative (AHR-1118) on norepinephrine metabolism. *Prog Neuropsychopharmacol*. 1980;4(1):43-9.

Inhibitor · Natural Compounds · Compound Libraries · Recombinant Proteins

This product is for Research Use Only · Not for Human or Veterinary or Therapeutic Use

Tel:781-999-4286 E_mail:info@targetmol.com Address:34 Washington Street,Wellesley Hills,MA 02481