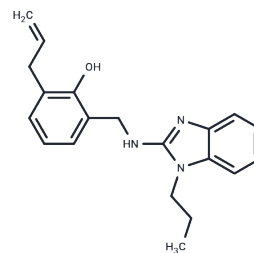


CM10

Chemical Properties

CAS No. : 692269-09-3
 Formula: C₂₀H₂₃N₃O
 Molecular Weight: 321.42
 Storage: Powder: -20°C for 3 years | In solvent: -80°C for 1 year
 Actual storage temperature shall be subject to the COA.



Biological Description

Description	CM10 is an aldehyde dehydrogenase 1A family(ALDH1A) inhibitor.
Targets(IC50)	Dehydrogenase

Solubility Information

Solubility	DMSO: 250 mg/mL (777.8 mM),Sonication is recommended. (< 1 mg/ml refers to the product slightly soluble or insoluble)
In vivo Formulation	10% DMSO+40% PEG300+5% Tween-80+45% Saline: 1 mg/mL (3.11 mM),Sonication is recommended. 10% DMSO+90% Saline: 10 mg/mL (31.11 mM),Suspension. <i>Please add the solvents sequentially, clarifying the solution as much as possible before adding the next one. Dissolve by heating and/or sonication if necessary. Working solution is recommended to be prepared and used immediately. The formulation provided above is for reference purposes only. In vivo formulations may vary and should be modified based on specific experimental conditions.</i>

Preparing Stock Solutions

	1mg	5mg	10mg
1 mM	3.1112 mL	15.556 mL	31.1119 mL
5 mM	0.6222 mL	3.1112 mL	6.2224 mL
10 mM	0.3111 mL	1.5556 mL	3.1112 mL
50 mM	0.0622 mL	0.3111 mL	0.6222 mL

Please select the appropriate solvent to prepare the stock solution, according to the solubility of the product in different solvents. Please use it as soon as possible.

Note: The dilution table applies only to solid products. For liquid products, please calculate the stock solution based on the stated concentration and/or density.

Reference

A Pan-ALDH1A Inhibitor Induces Necroptosis in Ovarian Cancer Stem-like Cells.[J]. Cell reports, 2019.

Inhibitor · Natural Compounds · Compound Libraries · Recombinant Proteins

This product is for Research Use Only· Not for Human or Veterinary or Therapeutic Use

Tel:781-999-4286 E_mail:info@targetmol.com Address:34 Washington Street,Wellesley Hills,MA 02481