

BMS-986176

## Chemical Properties

CAS No. : 1815613-42-3

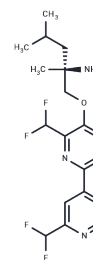
Formula: C19H23F4N3O

Molecular Weight: 385.4

Keep away from direct sunlight

Storage: Powder: -20°C for 3 years | In solvent: -80°C for 1 year

Actual storage temperature shall be subject to the COA.



## Biological Description

Description	AAK1-IN-1 is a highly selective and potent inhibitor of adaptor associated kinase 1 (AAK1, IC50 = 2 nM).
Targets(IC50)	AAK1, AAK1 (AP2 associated kinase 1)
In vitro	AAK1-IN-1 can be used for neurodegenerative disease studies. Adaptor associated kinase 1 (AAK1) is a member of the Ark1/Prkl family of serine/threonine kinases and modulates clathrin coated endocytosis and receptor-mediated endocytosis[1].

## Solubility Information

Solubility	DMSO: 150 mg/mL (389.21 mM), Sonication is recommended. (< 1 mg/ml refers to the product slightly soluble or insoluble)
In vivo Formulation	10% DMSO+40% PEG300+5% Tween-80+45% Saline: 5 mg/mL (12.97 mM), Sonication is recommended. <i>Please add the solvents sequentially, clarifying the solution as much as possible before adding the next one. Dissolve by heating and/or sonication if necessary. Working solution is recommended to be prepared and used immediately. The formulation provided above is for reference purposes only. In vivo formulations may vary and should be modified based on specific experimental conditions.</i>

### Preparing Stock Solutions

---

	1mg	5mg	10mg
1 mM	2.5947 mL	12.9735 mL	25.9471 mL
5 mM	0.5189 mL	2.5947 mL	5.1894 mL
10 mM	0.2595 mL	1.2974 mL	2.5947 mL
50 mM	0.0519 mL	0.2595 mL	0.5189 mL

---

Please select the appropriate solvent to prepare the stock solution, according to the solubility of the product in different solvents. Please use it as soon as possible.

Note: The dilution table applies only to solid products. For liquid products, please calculate the stock solution based on the stated concentration and/or density.

### Reference

Guanglin Luo, et al. Discovery of (S)-1-((2',6-Bis(difluoromethyl)-[2,4'-bipyridin]-5-yl)oxy)-2,4-dimethylpentan-2-amine (BMS-986176/LX-9211): A Highly Selective, CNS Penetrable, and Orally Active Adaptor Protein-2 Associated Kinase 1 Inhibitor in Clinical Trials for the Treatment of Neuropathic Pain. *J Med Chem.* 2022 Mar 24;65(6):4457-4480.

Guanglin Luo, et al. Biaryl kinase inhibitors. WO2015153720A1.

**Inhibitor · Natural Compounds · Compound Libraries · Recombinant Proteins**

This product is for Research Use Only · Not for Human or Veterinary or Therapeutic Use

Tel:781-999-4286 E\_mail:info@targetmol.com Address:34 Washington Street,Wellesley Hills,MA 02481