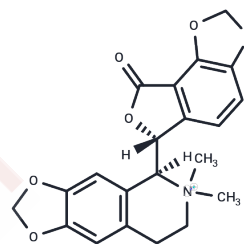


(+)-Bicuculline methiodide

Chemical Properties

CAS No. :	40709-69-1
Formula:	C ₂₁ H ₂₀ INO ₆
Molecular Weight:	509.29
Storage:	Store at low temperature Powder: -20°C for 3 years In solvent: -80°C for 1 year <i>Actual storage temperature shall be subject to the COA.</i>



Biological Description

Description	(+)-Bicuculline methiodide is a γ -aminobutyric acid type A (GABAA) receptor blocker that crosses the rat blood-brain barrier (BBB) and blocks epileptogens, which can be used to study neurological disorders such as epilepsy. (+)-Bicuculline methiodide reduces liver injury in septic rats.
Targets(IC50)	GABA Receptor

Solubility Information

Solubility	H ₂ O: <10.19 mg/ml, Sonication is recommended. DMSO: <25.46 mg/mL, Sonication is recommended. (< 1 mg/ml refers to the product slightly soluble or insoluble)
------------	---

Preparing Stock Solutions

	1mg	5mg	10mg
1 mM	1.9635 mL	9.8176 mL	19.6352 mL
5 mM	0.3927 mL	1.9635 mL	3.927 mL
10 mM	0.1964 mL	0.9818 mL	1.9635 mL
50 mM	0.0393 mL	0.1964 mL	0.3927 mL

Please select the appropriate solvent to prepare the stock solution, according to the solubility of the product in different solvents. Please use it as soon as possible.

Note: The dilution table applies only to solid products. For liquid products, please calculate the stock solution based on the stated concentration and/or density.

Reference

Johnson SW, et al. Bicuculline methiodide potentiates NMDA-dependent burst firing in rat dopamine neurons by blocking apamin-sensitive Ca²⁺-activated K⁺ currents. *Neurosci Lett*. 1997 Aug 1;231(1):13-6.

Yang Y, et al. Ketamine blocks bursting in the lateral habenula to rapidly relieve depression[J]. *Nature*, 2018, 554 (7692): 317-322.

Inhibitor · Natural Compounds · Compound Libraries · Recombinant Proteins

This product is for Research Use Only · Not for Human or Veterinary or Therapeutic Use

Tel:781-999-4286 E_mail:info@targetmol.com Address:34 Washington Street,Wellesley Hills,MA 02481